

CORRECTIVE SERVICES

AUSTRALIA

EMBARGO: 11.30AM (CANBERRA TIME) THURS 24 JUN 2004

C O N T E N T S

	<i>page</i>
Notes	2
Summary of findings	3

TABLES

1 Persons in full-time custody	7
2 Imprisonment rates	8
3 Persons in full-time custody, by sex and type of custody	9
4 Imprisonment rates, by sex and type of custody	12
5 Persons in full-time custody, by legal status and sentence type	15
6 Imprisonment rates, by legal status and sentence type	17
7 Sentenced receptions into full-time custody, by type of sentence	19
8 Indigenous persons in full-time custody, by sex	20
9 Indigenous imprisonment rates	21
10 Ratio of Indigenous to non-Indigenous rates of imprisonment	22
11 Indigenous persons in full-time custody, by legal status and sentence type	23
12 Indigenous imprisonment rates, by legal status and sentence type	25
13 Persons in periodic detention, by sex	27
14 Periodic detention rates	28
15 Federal sentenced persons in full-time custody, by sex	29
16 Persons in community-based corrections, by sex	30
17 Community-based corrections rates, by sex	31
18 Persons in community-based corrections, by type of order	32

ADDITIONAL INFORMATION

Explanatory Notes	34
Glossary	40

I N Q U I R I E S

- For further information about these and related statistics, contact the National Information and Referral Service on 1300 135 070 or Nick Skondreas on Melbourne (03) 96157381.

NOTES

FORTHCOMING ISSUES

<i>ISSUE (Quarter)</i>	<i>RELEASE DATE</i>
June 2004	23 September 2004
September 2004	1 December 2004

.....

ABOUT THIS PUBLICATION

This publication presents information on persons in custody and community-based corrections. The statistics are derived from information provided to the Australian Bureau of Statistics (ABS) from administrative records held by corrective services agencies in each state and territory, and from the Australian Government Attorney-General's Department for details on federal prisoners. Details are provided for each state and territory on numbers and imprisonment rates by type of custody (i.e. open or secure custody or periodic detention). Information is also presented on prisoner numbers by legal status (sentenced or unsentenced) and by sentence type, for all prisoners and for Indigenous prisoners, together with the number of sentenced receptions into custody and the number of federal prisoners.

The ABS acknowledges the valuable contribution of the Board of Management, the Advisory Group of the National Corrective Services Statistics Unit and the staff of the various agencies that provide the statistics that are presented in this publication.

SIGNIFICANT EVENTS

Significant events are described in paragraphs 37–43 of the Explanatory Notes.

FURTHER INFORMATION

More information about ABS activities in the field of Crime and Justice statistics is available from the Crime and Justice theme page on the ABS web site. To access the theme page, select Themes from the menu on the home page. Details of other ABS publications relating to Crime and Justice statistics can be found in paragraphs 44–46 of the Explanatory Notes.

.....

ABBREVIATIONS

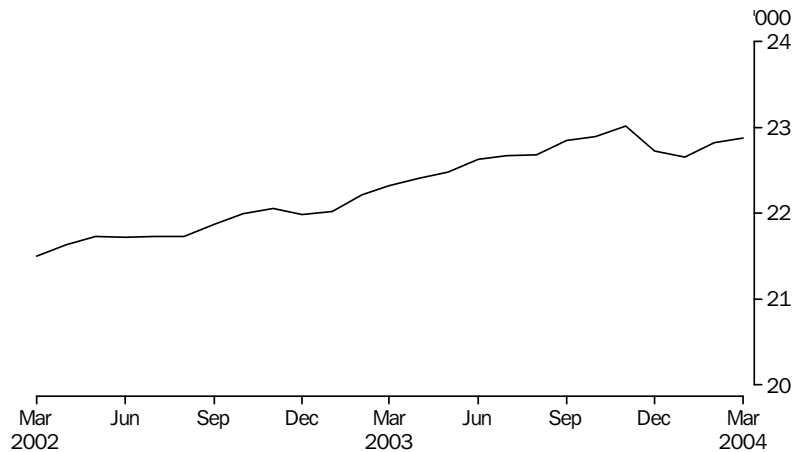
ABS	Australian Bureau of Statistics
ACT	Australian Capital Territory
Aust.	Australia
ERP	estimated resident population
NCCJS	National Centre for Crime and Justice Statistics
NSW	New South Wales
NT	Northern Territory
Qld	Queensland
SA	South Australia
Tas.	Tasmania
Vic.	Victoria
WA	Western Australia

Susan Linacre
Acting Australian Statistician

SUMMARY OF FINDINGS

NUMBER OF PRISONERS

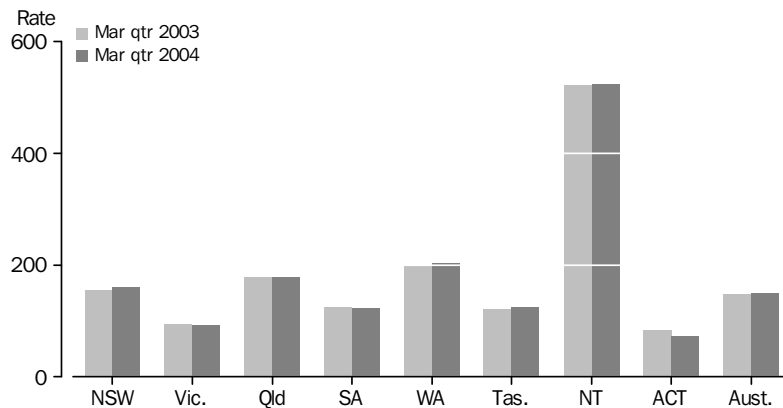
PERSONS IN PRISON CUSTODY, Average daily number per month



In the March quarter 2004, the average daily number of prisoners in Australia was 22,781, a decrease of 97 (less than 1%) on the December quarter 2003. The average daily number of prisoners in Australia increased by 596 (3%) since the March quarter 2003.

RATES PER 100,000 ADULTS

AVERAGE DAILY IMPRISONMENT RATE (a)



(a) Rate per 100,000 adult population.

Nationally, the average daily imprisonment rate was 149 prisoners per 100,000 adult population during the March quarter 2004, an increase of 1% since the March quarter 2003. The Northern Territory had the highest imprisonment rate (524 prisoners per 100,000 adult population), followed by Western Australia (204) and Queensland (178). The Australian Capital Territory (including Australian Capital Territory prisoners held in New South Wales prisons) and Victoria had the lowest imprisonment rates (73 and 93 prisoners per 100,000 adults respectively).

New South Wales recorded a 5% increase in the imprisonment rate since the March quarter 2003. Decreases in imprisonment rates were recorded in the Australian Capital Territory (including Australian Capital Territory prisoners in New South Wales prisons) and Victoria of 13% and 3% respectively during this period.

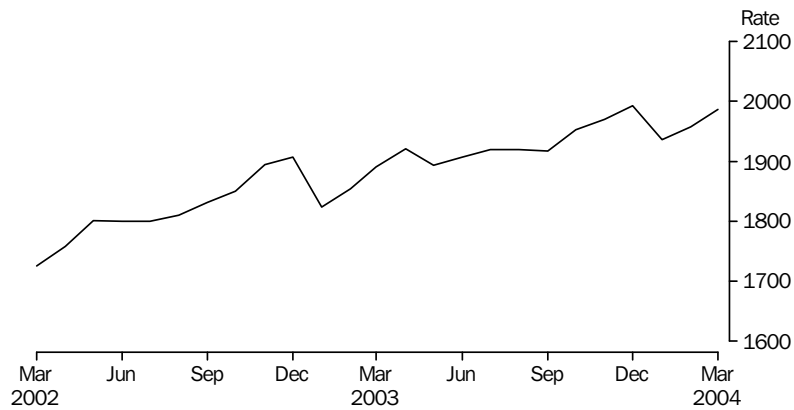
SUMMARY OF FINDINGS *continued*

SEX

Of the average daily number of prisoners in Australia in the March quarter 2004, 21,286 (93%) were male and 1,495 (7%) were female. The average daily imprisonment rate for males was 284 prisoners per 100,000 adult male population. The average daily imprisonment rate for females was 19 prisoners per 100,000 adult female population. Males were 15 times more likely to be in prison than females.

INDIGENOUS PRISONERS

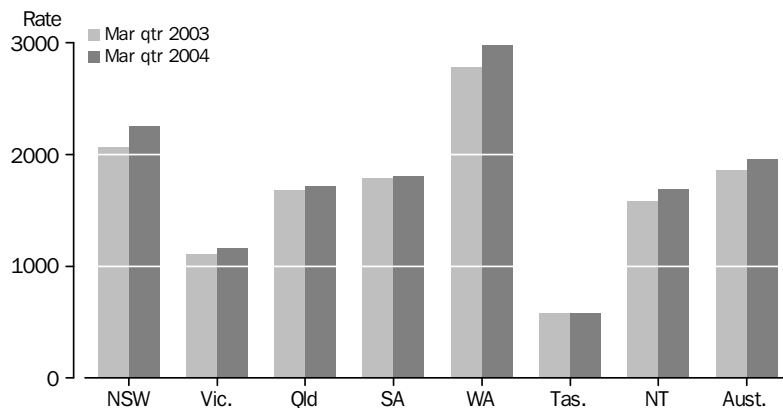
INDIGENOUS PERSONS IMPRISONMENT RATE (a)



(a) Rate per 100,000 adult Indigenous population.

The national rate of imprisonment for Indigenous persons in the March quarter 2004 was 1,960 per 100,000 adult Indigenous population, an increase of 6% since the March quarter 2003 and a decrease of less than 1% since the December quarter 2003.

INDIGENOUS IMPRISONMENT RATE (a)



(a) Rate per 100,000 adult Indigenous population, based on first day of month.

The highest rate of imprisonment for Indigenous persons was recorded in Western Australia (2,982 Indigenous persons per 100,000 adult Indigenous population), followed by New South Wales (2,250). The lowest rate of imprisonment was recorded by Tasmania (583). Over the past quarter Tasmania, Victoria, and South Australia recorded decreases in the Indigenous rates of imprisonment (12%, 5% and 4% respectively).

Between the March quarters 2003 and 2004, there was an increase recorded in the Indigenous rate of imprisonment in each state and territory. New South Wales recorded the highest increase (9%), followed by Western Australia (7%). The lowest increases were recorded by Tasmania and South Australia (both 1%).

SUMMARY OF FINDINGS *continued*

INDIGENOUS PRISONERS *continued*

In the March quarter 2004, the national Indigenous rate of imprisonment was 17 times the non-Indigenous rate of imprisonment. The highest ratio of Indigenous to non-Indigenous rates of imprisonment was recorded in Western Australia where the Indigenous rate of imprisonment was 23 times the non-Indigenous rate. Further information on the interpretation of statistics on Indigenous persons in prison custody is provided in paragraphs 32-36 of the Explanatory Notes of this publication.

TYPE OF CUSTODY

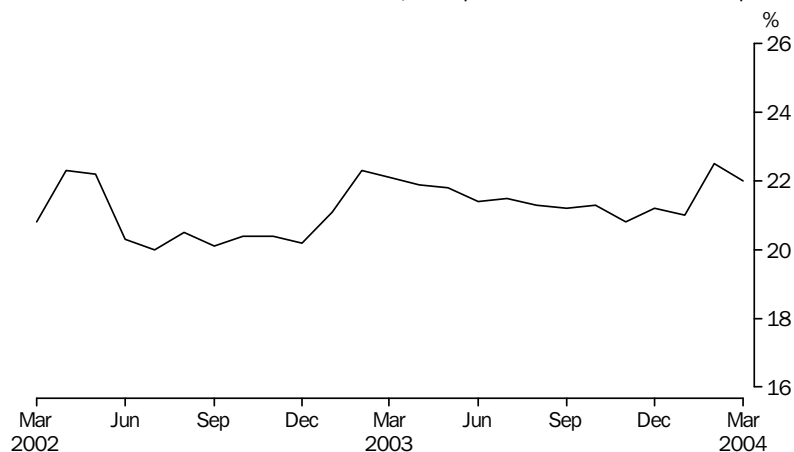
In the March quarter 2004, the average daily number of prisoners in secure prison custody was 16,443 (72% of prisoners in custody). The remaining prisoners were held in open prison custody. Nationally, the proportion of persons held in secure and open prison custody has remained very stable over the past year.

In the March quarter 2004, the highest proportions of prisoners held in secure prison custody were recorded in Victoria (91%) and South Australia (89%). The lowest proportions of prisoners in secure prison custody were recorded in the Australian Capital Territory (including Australian Capital Territory prisoners held in New South Wales prisons) and New South Wales (46% and 53% respectively).

LEGAL STATUS AND SENTENCE TYPE

Of the total national population of prisoners in full-time custody on the first day of the month (22,744), the average number of unsentenced prisoners was 4,968 (22%) for the March quarter 2004. South Australia and the Australian Capital Territory (including Australian Capital Territory prisoners held in New South Wales prisons) had the highest proportions of unsentenced prisoners (33% and 32% respectively). The lowest proportion of unsentenced prisoners was recorded in Western Australia (16%).

PERSONS IN PRISON CUSTODY, Proportion unsentenced per month



Nationally, between the March quarters 2003 and 2004, the numbers of both sentenced and unsentenced prisoners have increased by 3%.

SENTENCED RECEPTIONS

In the March quarter 2004, there were 5,653 sentenced receptions into full-time custody in Australia. The number of sentenced receptions decreased by 298 (5%) compared with the March quarter 2003. The largest decrease was recorded by Western Australia (12%), followed by the Australian Capital Territory (including Australian Capital Territory prisoners held in New South Wales prisons) which decreased by 8%.

SUMMARY OF FINDINGS *continued*

PERIODIC DETENTION

Periodic detention is a form of custody only used in New South Wales and the Australian Capital Territory. During the March quarter 2004 there was an average daily number of 733 persons in New South Wales and 89 persons in the Australian Capital Territory held in periodic detention. While the rate of imprisonment for periodic detention in New South Wales decreased by 14% between the March quarters 2003 and 2004, it increased by 20% in the Australian Capital Territory during the same period. For the March quarter 2004, 8% of persons in custody in New South Wales were in periodic detention, while in contrast, 33% of Australian Capital Territory persons in custody were in periodic detention.

FEDERAL PRISONERS

In the March quarter 2004, there were 667 federal prisoners in Australia, a decrease of 45 (6%) since the March quarter 2003. Of the federal prisoners, more than half were sentenced in New South Wales.

PERSONS IN COMMUNITY-BASED CORRECTIONS

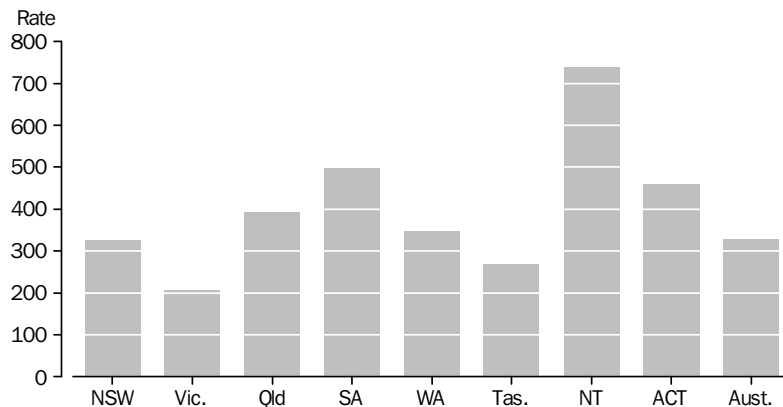
In the March quarter 2004, there were 50,172 persons in community-based corrections in Australia, a decrease of 821 (2%) since the March quarter 2003. However, Tasmania, the Northern Territory and Victoria recorded increases in persons in community-based corrections between the March quarter 2003 and the March quarter 2004 (10%, 9% and 8% respectively).

Rates per 100,000 adults

Nationally, the rate of persons in community-based corrections was 329 persons per 100,000 adult population for the March quarter 2004.

In the March quarter 2004, the male rate of participation in community-based corrections was 544 per 100,000 adult male population in comparison to 115 females per 100,000 adult female population. Males were five times more likely to be in community-based corrections than females.

COMMUNITY-BASED CORRECTIONS RATE (a)



(a) Rate per 100,000 adult population.

PERSONS IN FULL-TIME CUSTODY

	NSW(a)	Vic.	Qld(b)	SA	WA	Tas.	NT	ACT in ACT(c)	ACT in NSW(a)(d)	ACT Total(e)	Aust.(a)(b)
AVERAGE DAILY NUMBER											
2001	7 656	3 380	4 685	1 391	3 078	366	688	62	146	207	21 306
2002	7 705	3 550	5 030	1 469	2 803	423	675	58	133	190	21 713
2003	8 012	3 718	5 217	1 480	2 915	445	727	64	124	189	22 578
2003											
Mar Qtr	7 920	3 628	5 047	1 472	2 895	432	721	71	135	206	22 185
Jun Qtr	7 966	3 705	5 230	1 464	2 886	434	756	65	127	192	22 507
Sep Qtr	8 006	3 774	5 296	1 499	2 928	462	708	62	116	178	22 735
Dec Qtr	8 153	3 761	5 292	1 483	2 951	453	725	61	118	179	22 878
2004											
Mar Qtr	8 344	3 557	5 186	1 444	3 009	448	730	63	117	180	22 781
2003											
Jan	7 853	3 615	5 022	1 478	2 853	434	698	67	141	208	22 020
Feb	7 948	3 639	5 027	1 479	2 901	427	720	74	133	207	22 216
Mar	7 962	3 632	5 089	1 460	2 931	433	744	71	132	203	22 321
Apr	7 951	3 664	5 178	1 460	2 903	431	755	70	132	202	22 413
May	7 930	3 703	5 243	1 473	2 871	427	766	65	125	190	22 479
Jun	8 017	3 749	5 270	1 460	2 884	445	747	60	123	183	22 630
Jul	7 989	3 777	5 277	1 486	2 917	462	718	52	119	171	22 677
Aug	7 988	3 756	5 287	1 507	2 919	465	693	67	117	184	22 683
Sep	8 042	3 790	5 325	1 505	2 950	458	712	66	113	179	22 848
Oct	8 075	3 800	5 314	1 507	2 957	462	713	65	115	180	22 892
Nov	8 201	3 787	5 331	1 492	2 966	452	724	65	118	183	23 017
Dec	8 185	3 696	5 233	1 450	2 931	444	738	52	122	174	22 729
2004											
Jan	8 268	3 614	5 153	1 434	2 962	435	734	54	119	173	22 654
Feb	8 381	3 530	5 183	1 455	3 019	448	734	70	118	188	22 820
Mar	8 387	3 525	5 222	1 443	3 046	463	722	65	114	179	22 873

- (a) Data for NSW include ACT prisoners held in NSW prisons. The ACT in NSW figures are a subset of the NSW figures and are not separately counted in the Australian totals - see Explanatory Notes, paragraph 20.
- (b) 2001 data for Qld may be under enumerated — see Explanatory Notes, paragraph 14.
- (c) Refers to unsentenced persons in ACT prison custody and may include some sentenced fine default only prisoners — see Explanatory Notes, paragraph 20.
- (d) The figures are a single count taken on a specific day of the month and are not an average of the daily prisoner population for that month — see Explanatory Notes, paragraph 4.
- (e) ACT in ACT figures and ACT in NSW figures may not add to ACT total due to rounding.

IMPRISONMENT RATES

	NSW(a)	Vic.	Qld(b)	SA	WA	Tas.	NT	ACT(c)	Aust.(b)
RATE PER 100,000 ADULT POPULATION									
2001	152.5	90.6	170.8	121.1	216.8	103.3	502.8	88.2	145.0
2002	150.9	94.1	179.8	126.2	195.1	119.7	484.2	78.7	145.5
2003	155.6	97.4	181.7	125.9	199.7	124.7	526.5	77.0	149.2
2003									
Mar Qtr	154.2	95.6	177.6	125.7	199.7	121.6	522.3	84.5	147.5
Jun Qtr	154.9	97.2	182.8	124.8	198.2	121.9	548.5	78.4	149.0
Sep Qtr	155.1	98.3	183.7	127.3	199.7	129.0	514.1	72.4	149.6
Dec Qtr	158.1	98.2	182.4	125.9	201.0	126.0	521.2	72.9	150.5
2004									
Mar Qtr	161.5	92.5	177.6	122.3	203.9	124.4	524.1	73.2	149.3
2003									
Jan	152.8	95.2	176.8	126.2	196.8	122.4	505.9	85.4	146.4
Feb	154.8	95.8	176.9	126.3	200.1	120.4	521.9	84.9	147.7
Mar	155.1	95.6	179.1	124.6	202.2	122.0	538.9	83.2	148.4
Apr	154.5	96.1	181.0	124.4	199.4	121.1	547.8	82.5	148.4
May	154.2	97.2	183.3	125.5	197.2	119.8	555.8	77.9	148.8
Jun	156.0	98.4	184.2	124.4	198.0	124.9	541.5	74.7	149.9
Jul	154.7	98.4	183.0	126.1	198.9	129.1	521.4	69.4	149.3
Aug	154.8	97.9	183.4	127.9	199.1	129.9	503.6	75.1	149.3
Sep	155.9	98.7	184.7	127.7	201.1	127.9	517.4	72.9	150.4
Oct	156.6	99.2	183.2	127.9	201.4	128.5	512.6	73.4	150.6
Nov	159.0	98.9	183.7	126.6	202.0	125.8	520.4	74.5	151.4
Dec	158.6	96.6	180.3	123.1	199.7	123.7	530.5	71.0	149.5
2004									
Jan	159.9	94.0	176.5	121.5	200.7	120.6	527.4	70.4	148.5
Feb	162.2	91.8	177.5	123.2	204.6	124.2	526.9	76.6	149.5
Mar	162.4	91.7	178.9	122.2	206.4	128.5	518.3	73.0	149.9

(a) Data for NSW exclude ACT prisoners held in NSW prisons.

(b) 2001 data for Qld may be under enumerated — see Explanatory Notes, paragraph 14.

(c) Data for ACT include ACT prisoners held in ACT as well as ACT prisoners held in NSW — see Explanatory Notes, paragraph 22.

PERSONS IN FULL-TIME CUSTODY, by sex and type of custody

	NSW(a)	Vic.	Qld(b)	SA	WA	Tas.	NT	ACT in ACT(c)	ACT in NSW(a)(d)	ACT Total(e)	Aust. (a) (b)
MALES IN SECURE CUSTODY (AVERAGE DAILY NUMBER)											
2001	3 910	2 809	3 690	1 156	1 873	274	528	58	43	101	14 298
2002	3 939	2 945	3 964	1 202	1 858	305	523	55	39	93	14 791
2003	4 082	3 099	4 048	1 211	1 895	320	565	61	29	90	15 281
2003											
Mar Qtr	4 070	3 028	3 916	1 205	1 884	313	576	68	34	103	15 060
Jun Qtr	4 065	3 077	4 048	1 198	1 887	317	587	61	33	95	15 240
Sep Qtr	4 072	3 138	4 111	1 225	1 896	333	543	59	23	82	15 378
Dec Qtr	4 121	3 150	4 115	1 214	1 911	318	554	56	25	82	15 439
2004											
Mar Qtr	4 138	3 031	4 100	1 192	1 973	330	569	57	20	77	15 390
Jan	4 142	3 068	4 057	1 181	1 922	317	573	51	20	71	15 311
Feb	4 144	3 012	4 110	1 201	1 989	329	581	63	20	83	15 430
Mar	4 128	3 010	4 133	1 196	2 010	344	553	57	20	77	15 432
MALES IN OPEN CUSTODY (AVERAGE DAILY NUMBER)											
2001	3 251	334	706	153	986	73	141	..	89	89	5 643
2002	3 268	348	737	178	745	86	132	..	86	86	5 495
2003	3 415	350	825	175	800	96	141	..	90	90	5 803
2003											
Mar Qtr	3 334	323	793	178	792	88	124	..	93	93	5 632
Jun Qtr	3 382	350	834	174	787	89	144	..	86	86	5 760
Sep Qtr	3 426	372	839	176	808	102	143	..	89	89	5 865
Dec Qtr	3 514	356	835	174	815	103	152	..	90	90	5 950
2004											
Mar Qtr	3 641	289	764	164	806	89	144	..	92	92	5 896
Jan	3 582	307	775	165	813	88	145	..	95	95	5 875
Feb	3 661	279	752	164	800	90	138	..	93	93	5 883
Mar	3 680	280	764	162	805	88	149	..	89	89	5 928
MALES IN CUSTODY (AVERAGE DAILY NUMBER)											
2001	7 161	3 143	4 396	1 308	2 859	347	669	58	132	190	19 941
2002	7 207	3 293	4 701	1 381	2 603	392	655	55	124	179	20 286
2003	7 497	3 449	4 874	1 386	2 695	416	706	61	118	180	21 084
2003											
Mar Qtr	7 405	3 351	4 708	1 383	2 676	401	699	68	128	196	20 692
Jun Qtr	7 447	3 427	4 883	1 372	2 674	406	732	61	120	181	21 001
Sep Qtr	7 498	3 510	4 950	1 401	2 704	435	686	59	112	171	21 243
Dec Qtr	7 635	3 506	4 950	1 388	2 726	421	706	56	115	171	21 389
2004											
Mar Qtr	7 779	3 320	4 864	1 356	2 779	419	713	57	112	169	21 286
Jan	7 724	3 376	4 832	1 346	2 735	405	717	51	115	166	21 186
Feb	7 805	3 291	4 862	1 365	2 789	419	719	63	113	176	21 313
Mar	7 809	3 290	4 897	1 358	2 815	432	702	57	109	166	21 360

.. not applicable

(a) Data for NSW include ACT prisoners held in NSW prisons. The ACT in NSW figures are a subset of the NSW figures and are not separately counted in the Australian totals — see Explanatory Notes, paragraph 20.

(b) 2001 data for Qld may be under enumerated — see Explanatory Notes, paragraph 14.

(c) Refers to unsentenced persons in ACT prison custody and may include some sentenced fine default only prisoners — see Explanatory Notes, paragraph 20.

(d) The figures are a single count taken on a specific day of the month and are not an average of the daily prisoner population for that month — see Explanatory Notes, paragraph 4.

(e) ACT in ACT figures and ACT in NSW figures may not add to ACT total due to rounding.

PERSONS IN FULL-TIME CUSTODY, by sex and type of custody *continued*

	NSW(a)	Vic.	Qld(b)	SA	WA	Tas.	NT	ACT in ACT(c)	ACT in NSW(a)(d)	ACT Total(e)	Aust. (a) (b)
FEMALES IN SECURE CUSTODY (AVERAGE DAILY NUMBER)											
2001	299	189	241	83	139	20	18	4	1	5	993
2002	268	206	254	88	114	32	19	3	—	4	985
2003	275	219	268	94	136	29	21	3	—	3	1 045
2003											
Mar Qtr	274	227	266	89	135	30	21	2	—	2	1 045
Jun Qtr	281	226	272	93	136	28	25	3	—	3	1 064
Sep Qtr	269	215	265	99	137	26	21	3	—	3	1 035
Dec Qtr	274	207	268	95	137	32	18	4	—	4	1 035
2004											
Mar Qtr	307	193	264	88	149	30	17	6	—	6	1 053
Jan	294	194	262	88	141	30	17	2	—	2	1 028
Feb	321	195	261	90	147	29	15	7	—	7	1 064
Mar	306	192	269	85	158	31	19	8	—	8	1 068
FEMALES IN OPEN CUSTODY (AVERAGE DAILY NUMBER)											
2001	196	49	48	..	79	12	12	371
2002	230	51	75	..	86	8	8	442
2003	240	50	76	..	84	6	6	450
2003											
Mar Qtr	241	51	73	..	84	8	8	448
Jun Qtr	238	52	76	..	76	7	7	443
Sep Qtr	238	50	81	..	87	5	5	457
Dec Qtr	244	48	74	..	88	3	3	454
2004											
Mar Qtr	259	44	58	..	81	5	5	442
Jan	250	45	59	..	87	4	4	440
Feb	255	45	59	..	84	5	5	443
Mar	272	44	55	..	72	5	5	444
FEMALES IN CUSTODY (AVERAGE DAILY NUMBER)											
2001	495	238	289	83	219	20	18	4	13	17	1 365
2002	497	257	329	88	200	32	19	3	8	12	1 426
2003	515	269	343	94	220	29	21	3	6	9	1 495
2003											
Mar Qtr	515	278	339	89	219	30	21	2	8	10	1 493
Jun Qtr	519	279	348	93	212	28	25	3	7	10	1 506
Sep Qtr	508	264	346	99	224	26	21	3	5	7	1 492
Dec Qtr	518	255	342	95	225	32	18	4	3	8	1 489
2004											
Mar Qtr	566	238	322	88	229	30	17	6	5	10	1 495
Jan	544	239	321	88	227	30	17	2	4	6	1 467
Feb	576	239	321	90	230	29	15	7	5	12	1 507
Mar	578	236	324	85	231	31	19	8	5	13	1 512

.. not applicable

— nil or rounded to zero (including null cells)

(a) Data for NSW include ACT prisoners held in NSW prisons. The ACT in NSW figures are a subset of the NSW figures and are not separately counted in the Australian totals — see Explanatory Notes, paragraph 20.

(b) 2001 data for Qld may be under enumerated — see Explanatory Notes, paragraph 14.

(c) Refers to unsentenced persons in ACT prison custody and may include some sentenced fine default only prisoners — see Explanatory Notes, paragraph 20.

(d) The figures are a single count taken on a specific day of the month and are not an average of the daily prisoner population for that month — see Explanatory Notes, paragraph 4.

(e) ACT in ACT figures and ACT in NSW figures may not add to ACT total due to rounding.

PERSONS IN FULL-TIME CUSTODY, by sex and type of custody *continued*

	NSW(a)	Vic.	Qld(b)	SA	WA	Tas.	NT	ACT in ACT(c)	ACT in NSW(a)(d)	ACT Total(e)	Aust. (a) (b)
PERSONS IN SECURE CUSTODY (AVERAGE DAILY NUMBER)											
2001	4 209	2 998	3 931	1 238	2 013	293	546	62	44	105	15 291
2002	4 207	3 151	4 218	1 290	1 972	337	543	58	39	97	15 776
2003	4 357	3 317	4 316	1 304	2 031	350	586	64	29	93	16 325
2003											
Mar Qtr	4 345	3 255	4 181	1 294	2 019	343	597	71	34	105	16 105
Jun Qtr	4 345	3 303	4 320	1 290	2 023	346	612	65	33	98	16 304
Sep Qtr	4 341	3 353	4 376	1 324	2 033	360	565	62	23	85	16 413
Dec Qtr	4 395	3 356	4 383	1 309	2 048	350	572	61	25	86	16 474
2004											
Mar Qtr	4 445	3 224	4 364	1 280	2 122	360	586	63	20	83	16 443
Jan	4 436	3 262	4 319	1 269	2 062	347	590	54	20	74	16 339
Feb	4 465	3 207	4 372	1 291	2 136	358	596	70	20	90	16 494
Mar	4 434	3 201	4 402	1 281	2 168	375	573	65	20	85	16 501
PERSONS IN OPEN CUSTODY (AVERAGE DAILY NUMBER)											
2001	3 447	382	753	153	1 065	73	141	..	102	102	6 015
2002	3 498	400	812	178	831	86	132	..	94	94	5 937
2003	3 655	400	901	175	884	96	141	..	95	95	6 253
2003											
Mar Qtr	3 575	373	865	178	875	88	124	..	101	101	6 080
Jun Qtr	3 621	402	910	174	863	89	144	..	93	93	6 203
Sep Qtr	3 664	421	920	176	895	102	143	..	93	93	6 322
Dec Qtr	3 758	404	909	174	903	103	152	..	93	93	6 404
2004											
Mar Qtr	3 900	333	822	164	887	89	144	..	97	97	6 338
Jan	3 832	352	834	165	900	88	145	..	99	99	6 315
Feb	3 916	323	811	164	883	90	138	..	98	98	6 326
Mar	3 953	324	819	162	877	88	149	..	94	94	6 372
PERSONS IN CUSTODY (AVERAGE DAILY NUMBER)											
2001	7 656	3 380	4 685	1 391	3 078	366	688	62	146	207	21 306
2002	7 705	3 550	5 030	1 469	2 803	423	675	58	133	190	21 713
2003	8 012	3 718	5 217	1 480	2 915	445	727	64	124	189	22 578
2003											
Mar Qtr	7 920	3 628	5 047	1 472	2 895	432	721	71	135	206	22 185
Jun Qtr	7 966	3 705	5 230	1 464	2 886	434	756	65	127	192	22 507
Sep Qtr	8 006	3 774	5 296	1 499	2 928	462	708	62	116	178	22 735
Dec Qtr	8 153	3 761	5 292	1 483	2 951	453	725	61	118	179	22 878
2004											
Mar Qtr	8 344	3 557	5 186	1 444	3 009	448	730	63	117	180	22 781
Jan	8 268	3 614	5 153	1 434	2 962	435	734	54	119	173	22 654
Feb	8 381	3 530	5 183	1 455	3 019	448	734	70	118	188	22 820
Mar	8 387	3 525	5 222	1 443	3 046	463	722	65	114	179	22 873

.. not applicable

(a) Data for NSW include ACT prisoners held in NSW prisons. The ACT in NSW figures are a subset of the NSW figures and are not separately counted in the Australian totals — see Explanatory Notes, paragraph 20.

(b) 2001 data for Qld may be under enumerated — see Explanatory Notes, paragraph 14.

(c) Refers to unsentenced persons in ACT prison custody and may include some sentenced fine default only prisoners — see Explanatory Notes, paragraph 20.

(d) The figures are a single count taken on a specific day of the month and are not an average of the daily prisoner population for that month — see Explanatory Notes, paragraph 4.

(e) ACT in ACT figures and ACT in NSW figures may not add to ACT total due to rounding.

IMPRISONMENT RATES, by sex and type of custody

	NSW(a)	Vic.	Qld(b)	SA	WA	Tas.	NT	ACT(c)	Aust.(b)
MALES IN SECURE CUSTODY (RATE PER 100,000 ADULT POPULATION)									
2001	159.3	153.7	271.2	205.6	264.0	158.9	724.9	86.7	197.3
2002	158.2	160.2	287.7	211.2	260.1	177.7	714.3	78.6	201.8
2003	162.7	166.5	286.3	210.5	261.5	184.7	776.9	75.4	205.6
2003									
Mar Qtr	162.8	163.6	280.2	210.3	262.0	181.5	792.7	86.2	204.0
Jun Qtr	162.1	165.7	287.7	208.6	261.2	183.4	809.5	79.4	205.6
Sep Qtr	162.0	167.7	289.9	212.5	260.6	191.7	752.3	68.3	206.2
Dec Qtr	163.9	168.8	287.0	210.4	262.2	181.9	753.8	68.1	206.6
2004									
Mar Qtr	164.4	161.7	284.2	206.2	269.3	188.1	772.1	64.1	205.1
Jan	164.5	163.8	281.2	204.3	262.3	180.8	777.6	59.4	204.1
Feb	164.6	160.7	284.9	207.7	271.5	187.5	788.8	69.3	205.7
Mar	164.0	160.6	286.5	206.9	274.4	196.1	751.5	64.2	205.7
MALES IN OPEN CUSTODY (RATE PER 100,000 ADULT POPULATION)									
2001	130.2	18.2	51.9	27.2	138.9	42.6	193.9	76.9	77.9
2002	129.1	19.0	53.5	31.3	104.3	50.2	179.5	72.3	75.0
2003	133.5	18.8	58.4	30.5	110.5	55.1	193.7	74.9	78.1
2003									
Mar Qtr	130.7	17.4	56.7	31.1	110.1	51.2	170.1	78.5	76.3
Jun Qtr	132.5	18.8	59.3	30.4	108.9	51.2	198.9	72.4	77.7
Sep Qtr	133.6	19.9	59.1	30.5	111.1	58.6	197.8	73.9	78.6
Dec Qtr	137.0	19.1	58.3	30.1	111.8	58.9	207.2	74.7	79.6
2004									
Mar Qtr	141.6	15.4	53.0	28.3	110.0	50.5	195.7	76.8	78.6
Jan	139.2	16.4	53.7	28.5	111.0	50.1	196.5	79.1	78.3
Feb	142.4	14.9	52.1	28.4	109.2	51.2	187.5	77.4	78.4
Mar	143.4	14.9	52.9	28.0	109.8	50.3	202.3	74.1	79.0
MALES IN CUSTODY (RATE PER 100,000 ADULT POPULATION)									
2001	289.6	171.9	323.1	232.8	402.9	201.4	918.9	163.6	275.1
2002	287.3	179.2	341.2	242.5	364.4	227.9	893.8	150.9	276.8
2003	296.2	185.3	344.7	241.0	372.0	239.7	970.6	150.3	283.7
2003									
Mar Qtr	293.5	181.1	336.9	241.4	372.0	232.8	962.9	164.7	280.2
Jun Qtr	294.6	184.5	347.0	239.0	370.1	234.6	1 008.4	151.9	283.3
Sep Qtr	295.6	187.6	349.1	243.0	371.7	250.3	950.2	142.3	284.8
Dec Qtr	300.9	187.9	345.3	240.6	374.1	240.9	961.0	142.8	286.2
2004									
Mar Qtr	306.0	177.2	337.1	234.5	379.4	238.6	967.8	140.9	283.7
Jan	303.7	180.1	334.9	232.8	373.3	230.9	974.1	138.4	282.4
Feb	307.0	175.6	337.0	236.1	380.7	238.6	976.3	146.7	284.1
Mar	307.3	175.6	339.4	234.9	384.2	246.3	953.8	138.2	284.7

(a) Data for NSW exclude ACT prisoners held in NSW prisons.

(b) 2001 data for Qld may be under enumerated — see Explanatory Notes, paragraph 14.

(c) Data for ACT include ACT prisoners held in ACT as well as ACT prisoners held in NSW — see Explanatory Notes, paragraph 22.

IMPRISONMENT RATES, by sex and type of custody *continued*

	NSW(a)	Vic.	Qld(b)	SA	WA	Tas.	NT	ACT(c)	Aust.(b)
.....									
FEMALES IN SECURE CUSTODY (RATE PER 100,000 ADULT POPULATION)									
2001	11.9	10.0	17.5	14.1	19.6	10.7	28.4	np	13.3
2002	10.5	10.6	17.9	14.8	15.8	17.4	29.5	np	13.0
2003	10.7	11.2	18.4	15.6	18.5	15.9	32.7	np	13.6
2003									
Mar Qtr	10.7	11.7	18.4	14.8	18.5	16.7	32.8	np	13.6
Jun Qtr	10.9	11.6	18.7	15.5	18.5	15.5	37.6	np	13.8
Sep Qtr	10.4	10.9	18.1	16.4	18.6	14.3	32.6	np	13.4
Dec Qtr	10.6	10.5	18.2	15.8	18.5	17.1	28.0	np	13.4
2004									
Mar Qtr	11.8	9.8	17.9	14.5	20.0	16.1	26.2	np	13.6
Jan	11.4	9.8	17.7	14.6	18.9	16.0	26.0	np	13.2
Feb	12.4	9.9	17.7	14.9	19.8	15.6	22.6	np	13.7
Mar	11.8	9.7	18.2	14.1	21.3	16.7	29.5	np	13.8
.....									
FEMALES IN OPEN CUSTODY (RATE PER 100,000 ADULT POPULATION)									
2001	7.3	2.6	3.4	..	11.2	10.5	5.0
2002	8.7	2.6	5.3	..	11.9	np	5.8
2003	9.1	2.6	5.2	..	11.4	np	5.8
2003									
Mar Qtr	9.1	2.6	5.0	..	11.5	np	5.8
Jun Qtr	9.0	2.7	5.2	..	10.4	np	5.8
Sep Qtr	9.0	2.5	5.6	..	11.8	np	5.9
Dec Qtr	9.3	2.4	5.0	..	12.0	np	5.9
2004									
Mar Qtr	9.8	2.3	3.9	..	10.9	np	5.7
Jan	9.5	2.3	4.0	..	11.6	np	5.7
Feb	9.7	2.3	4.0	..	11.2	np	5.7
Mar	10.3	2.2	3.7	..	9.7	np	5.7
.....									
FEMALES IN CUSTODY (RATE PER 100,000 ADULT POPULATION)									
2001	19.3	12.5	20.9	14.1	30.8	10.7	28.4	14.5	18.3
2002	19.2	13.3	23.2	14.8	27.7	17.4	29.5	9.5	18.8
2003	19.8	13.7	23.6	15.6	29.9	15.9	32.7	np	19.4
2003									
Mar Qtr	19.8	14.3	23.5	14.8	29.9	16.7	32.8	8.0	19.5
Jun Qtr	19.9	14.3	23.9	15.5	28.9	15.5	37.6	8.4	19.6
Sep Qtr	19.4	13.4	23.6	16.4	30.4	14.3	32.6	np	19.3
Dec Qtr	19.9	13.0	23.3	15.8	30.5	17.1	28.0	np	19.3
2004									
Mar Qtr	21.7	12.1	21.8	14.5	30.9	16.1	26.2	8.2	19.3
Jan	20.8	12.1	21.7	14.6	30.5	16.0	26.0	np	18.9
Feb	22.0	12.1	21.7	14.9	31.0	15.6	22.6	9.3	19.4
Mar	22.1	12.0	22.0	14.1	31.0	16.7	29.5	10.5	19.5

.. not applicable

np not available for publication but included in totals where applicable, unless otherwise indicated

(a) Data for NSW exclude ACT prisoners held in NSW prisons.

(b) 2001 data for Qld may be under enumerated — see Explanatory Notes, paragraph 14.

(c) Data for ACT include ACT prisoners held in ACT as well as ACT prisoners held in NSW — see Explanatory Notes, paragraph 22.

IMPRISONMENT RATES, by sex and type of custody *continued*

	NSW(a)	Vic.	Qld(b)	SA	WA	Tas.	NT	ACT(c)	Aust.(b)
PERSONS IN SECURE CUSTODY (RATE PER 100,000 ADULT POPULATION)									
2001	84.6	80.4	143.3	107.8	141.8	82.6	399.5	44.9	104.1
2002	83.1	83.5	150.8	110.8	137.2	95.3	389.7	39.9	105.7
2003	85.4	86.9	150.3	111.0	139.1	97.9	424.5	38.1	107.9
2003									
Mar Qtr	85.4	85.7	147.2	110.5	139.3	96.8	432.7	43.0	107.1
Jun Qtr	85.2	86.7	151.0	109.9	138.9	97.0	443.8	40.2	108.0
Sep Qtr	84.9	87.4	151.8	112.3	138.6	100.5	410.3	34.4	108.0
Dec Qtr	86.0	87.7	151.1	111.1	139.5	97.3	411.6	35.0	108.4
2004									
Mar Qtr	86.8	83.9	149.5	108.4	143.8	99.8	420.6	33.7	107.8
Jan	86.7	84.9	147.9	107.5	139.7	96.2	423.5	30.0	107.1
Feb	87.2	83.4	149.8	109.4	144.7	99.3	427.8	36.6	108.1
Mar	86.6	83.3	150.8	108.5	146.9	104.0	411.3	34.7	108.1
PERSONS IN OPEN CUSTODY (RATE PER 100,000 ADULT POPULATION)									
2001	67.9	10.2	27.5	13.3	75.0	20.7	103.3	43.3	40.9
2002	67.8	10.6	29.0	15.3	57.8	24.4	94.4	38.8	39.8
2003	70.2	10.5	31.4	14.9	60.6	26.8	102.0	38.9	41.3
2003									
Mar Qtr	68.8	9.8	30.5	15.2	60.4	24.9	89.5	41.5	40.4
Jun Qtr	69.7	10.6	31.8	14.8	59.3	24.9	104.7	38.2	41.1
Sep Qtr	70.2	11.0	31.9	14.9	61.0	28.5	103.8	38.0	41.6
Dec Qtr	72.1	10.6	31.3	14.7	61.5	28.7	109.5	37.9	42.1
2004									
Mar Qtr	74.6	8.7	28.2	13.9	60.1	24.6	103.5	39.5	41.5
Jan	73.3	9.1	28.6	14.0	61.0	24.4	103.9	40.3	41.4
Feb	74.9	8.4	27.8	13.9	59.9	24.9	99.2	39.9	41.5
Mar	75.7	8.4	28.1	13.7	59.4	24.5	107.0	38.3	41.8
PERSONS IN CUSTODY (RATE PER 100,000 ADULT POPULATION)									
2001	152.5	90.6	170.8	121.1	216.8	103.3	502.8	88.2	145.0
2002	150.9	94.1	179.8	126.2	195.1	119.7	484.2	78.7	145.5
2003	155.6	97.4	181.7	125.9	199.7	124.7	526.5	77.0	149.2
2003									
Mar Qtr	154.2	95.6	177.6	125.7	199.7	121.6	522.3	84.5	147.5
Jun Qtr	154.9	97.2	182.8	124.8	198.2	121.9	548.5	78.4	149.0
Sep Qtr	155.1	98.3	183.7	127.3	199.7	129.0	514.1	72.4	149.6
Dec Qtr	158.1	98.2	182.4	125.9	201.0	126.0	521.2	72.9	150.5
2004									
Mar Qtr	161.5	92.5	177.6	122.3	203.9	124.4	524.1	73.2	149.3
Jan	159.9	94.0	176.5	121.5	200.7	120.6	527.4	70.4	148.5
Feb	162.2	91.8	177.5	123.2	204.6	124.2	526.9	76.6	149.5
Mar	162.4	91.7	178.9	122.2	206.4	128.5	518.3	73.0	149.9

(a) Data for NSW exclude ACT prisoners held in NSW prisons.

(b) 2001 data for Qld may be under enumerated — see Explanatory Notes, paragraph 14.

(c) Data for ACT include ACT prisoners held in ACT as well as ACT prisoners held in NSW — see Explanatory Notes, paragraph 22.

PERSONS IN FULL TIME CUSTODY, by legal status and sentence type

	NSW(a)	Vic.	Qld(b)	SA	WA	Tas. (c)	NT	ACT in ACT(d)	ACT in NSW(a)	ACT Total(e)	Aust. (a) (b) (c)
UNSENTENCED (NUMBER ON FIRST DAY OF MONTH)											
2001 (f)	1 650	512	913	476	494	61	139	65	3	68	4 309
2002 (f)	1 666	621	1 006	492	471	77	110	54	2	55	4 495
2003 (f)	1 847	699	1 099	491	446	81	126	57	—	57	4 847
2003											
Mar Qtr(f)	1 850	671	1 073	502	451	80	124	58	—	58	4 809
Jun Qtr(f)	1 862	696	1 114	492	448	78	138	49	—	49	4 878
Sep Qtr(f)	1 843	712	1 105	486	445	81	114	63	—	63	4 849
Dec Qtr(f)	1 834	718	1 105	485	439	83	127	60	—	60	4 851
2004											
Mar Qtr	1 969	709	1 072	474	466	79	145	54	—	54	4 968
Jan	1 921	694	1 031	449	409	58	148	43	—	43	4 753
Feb	2 041	731	1 099	479	485	79	149	55	—	55	5 118
Mar	1 945	702	1 085	495	504	101	138	63	—	63	5 033
SENTENCED—FINE DEFAULT ONLY (NUMBER ON FIRST DAY ON MONTH)											
2001 (f)	2	—	4	2	49	24	20	1	—	1	104
2002 (f)	2	1	23	1	45	14	3	2	—	2	90
2003 (f)	1	1	20	1	63	11	1	1	—	2	98
2003											
Mar Qtr(f)	—	—	21	1	77	7	2	1	—	1	108
Jun Qtr(f)	1	1	17	1	56	5	2	2	1	3	84
Sep Qtr(f)	1	1	20	—	57	18	—	1	1	2	100
Dec Qtr(f)	1	2	23	—	60	12	—	1	—	1	99
2004											
Mar Qtr	1	4	26	—	61	16	—	1	—	1	109
Jan	1	5	24	—	55	18	—	—	—	—	103
Feb	2	3	27	—	61	15	—	1	—	1	109
Mar	—	3	28	—	68	14	—	1	—	1	114
OTHER SENTENCED (NUMBER ON FIRST DAY OF MONTH)											
2001 (f)	6 030	2 864	3 741	921	2 546	241	529	..	142	142	16 872
2002 (f)	6 059	2 921	3 929	983	2 289	289	564	..	131	131	17 033
2003 (f)	6 165	3 023	4 099	994	2 398	330	603	..	122	122	17 612
2003											
Mar Qtr(f)	6 052	2 950	3 930	968	2 330	289	589	..	134	134	17 108
Jun Qtr(f)	6 111	3 001	4 097	979	2 384	305	623	..	122	122	17 500
Sep Qtr(f)	6 180	3 064	4 173	1 005	2 418	366	595	..	115	115	17 802
Dec Qtr(f)	6 318	3 079	4 197	1 024	2 458	359	603	..	118	118	18 038
2004											
Mar Qtr	6 361	2 871	4 089	978	2 430	351	588	..	117	117	17 668
Jan	6 329	2 933	4 135	1 001	2 423	354	584	..	119	119	17 759
Feb	6 317	2 857	4 036	960	2 436	348	588	..	118	118	17 542
Mar	6 437	2 824	4 095	972	2 431	351	592	..	114	114	17 702

.. not applicable

— nil or rounded to zero (including null cells)

(a) Data for NSW include ACT prisoners held in NSW prisons. The ACT in NSW figures are a subset of the NSW figures and are not separately counted in the Australian totals — see Explanatory Notes, paragraph 20.

(b) 2001 data for Qld may be under enumerated — see Explanatory Notes, paragraph 14.

(c) Tasmanian data prior to the September quarter 2003 are under enumerated — see Explanatory Notes, paragraph 12.

(d) Refers to unsentenced persons in ACT prison custody and may include some sentenced fine default only prisoners—see Explanatory Notes, paragraph 20.

(e) ACT in ACT figures and ACT in NSW figures may not add to ACT total due to rounding.

(f) Figures for the quarter and year for first day of month counts are calculated as a simple average — see Explanatory Notes, paragraph 5.

	NSW(a)	Vic.	Qld(b)	SA	WA	Tas. (c)	NT	ACT in ACT(d)	ACT in NSW(a)	ACT Total(e)	Aust. (a) (b) (c)
TOTAL SENTENCED (NUMBER ON FIRST DAY OF MONTH)											
2001 (f)	6 033	2 864	3 746	922	2 595	265	549	1	142	143	16 975
2002 (f)	6 061	2 922	3 952	984	2 334	303	567	2	131	133	17 123
2003 (f)	6 166	3 024	4 120	995	2 460	340	604	1	123	124	17 710
2003											
Mar Qtr(f)	6 052	2 950	3 951	969	2 407	296	591	1	134	135	17 216
Jun Qtr(f)	6 112	3 002	4 114	980	2 439	310	625	2	123	125	17 584
Sep Qtr(f)	6 181	3 065	4 194	1 005	2 476	384	596	1	115	117	17 902
Dec Qtr(f)	6 318	3 081	4 220	1 024	2 519	372	603	1	118	119	18 137
2004											
Mar Qtr	6 362	2 875	4 115	978	2 491	367	588	1	117	118	17 776
Jan	6 330	2 938	4 159	1 001	2 478	372	584	—	119	119	17 862
Feb	6 319	2 860	4 063	960	2 497	363	588	1	118	119	17 651
Mar	6 437	2 827	4 123	972	2 499	365	592	1	114	115	17 816
TOTAL (NUMBER ON FIRST DAY OF MONTH)											
2001 (f)	7 683	3 377	4 658	1 398	3 089	326	688	66	145	211	21 284
2002 (f)	7 727	3 543	4 958	1 475	2 805	380	676	55	132	188	21 618
2003 (f)	8 013	3 724	5 219	1 486	2 906	421	729	59	123	181	22 556
2003											
Mar Qtr(f)	7 902	3 621	5 024	1 471	2 858	376	715	59	134	193	22 025
Jun Qtr(f)	7 974	3 698	5 228	1 472	2 887	388	763	51	123	174	22 461
Sep Qtr(f)	8 025	3 777	5 298	1 491	2 920	466	709	64	115	180	22 751
Dec Qtr(f)	8 152	3 799	5 325	1 509	2 958	454	730	60	118	179	22 988
2004											
Mar Qtr	8 331	3 584	5 187	1 452	2 957	446	733	54	117	171	22 744
Jan	8 251	3 632	5 190	1 450	2 887	430	732	43	119	162	22 615
Feb	8 360	3 591	5 162	1 439	2 982	442	737	56	118	174	22 769
Mar	8 382	3 529	5 208	1 467	3 003	466	730	64	114	178	22 849

— nil or rounded to zero (including null cells)

(a) Data for NSW include ACT prisoners held in NSW prisons. The ACT in NSW figures are a subset of the NSW figures and are not separately counted in the Australian totals — see Explanatory Notes, paragraph 20.

(b) 2001 data for Qld may be under enumerated — see Explanatory Notes, paragraph 14.

(c) Tasmanian data prior to the September quarter 2003 are under enumerated — see Explanatory Notes, paragraph 12.

(d) Refers to unsentenced persons in ACT prison custody and may include some sentenced fine default only prisoners—see Explanatory Notes, paragraph 20.

(e) ACT in ACT figures and ACT in NSW figures may not add to ACT total due to rounding.

(f) Figures for the quarter and year for first day of month counts are calculated as a simple average — see Explanatory Notes, paragraph 5.

IMPRISONMENT RATES, by legal status and sentence type

	NSW(a)	Vic.	Qld(b)	SA	WA	Tas.(c)	NT	ACT(d)	Aust.(b)(c)
UNSENTENCED (RATE PER 100,000 ADULT POPULATION)									
2001 (e)	33.4	13.7	33.3	41.4	34.8	17.2	101.4	28.9	29.3
2002 (e)	33.2	16.5	36.0	42.2	32.8	21.7	78.6	22.8	30.1
2003 (e)	36.4	18.3	38.3	41.8	30.5	22.5	91.0	23.5	32.0
2003									
Mar Qtr(e)	36.6	17.7	37.8	42.9	31.1	22.5	89.9	23.7	32.0
Jun Qtr(e)	36.8	18.3	38.9	41.9	30.8	21.9	100.1	20.2	32.3
Sep Qtr(e)	36.2	18.6	38.3	41.2	30.3	22.7	82.6	25.6	31.9
Dec Qtr(e)	36.1	18.8	38.1	41.2	29.9	23.0	91.3	24.3	31.9
2004									
Mar Qtr	38.6	18.4	36.7	40.2	31.6	22.0	104.1	21.9	32.6
Jan	37.7	18.1	35.3	38.0	27.7	16.1	106.3	17.5	31.1
Feb	40.1	19.0	37.6	40.6	32.9	21.9	107.0	22.4	33.5
Mar	38.2	18.3	37.2	41.9	34.1	28.0	99.1	25.7	33.0
SENTENCED—FINE DEFAULT ONLY (RATE PER 100,000 ADULT POPULATION)									
2001 (e)	np	—	np	np	3.5	6.8	14.9	np	0.7
2002 (e)	np	np	0.8	np	3.1	4.0	np	np	0.6
2003 (e)	np	np	0.7	np	4.3	3.0	np	np	0.6
2003									
Mar Qtr(e)	—	—	0.7	np	5.3	np	np	np	0.7
Jun Qtr(e)	np	np	0.6	np	3.8	np	np	np	0.6
Sep Qtr(e)	np	np	0.7	—	3.9	5.1	—	np	0.7
Dec Qtr(e)	np	np	0.8	—	4.1	3.4	—	np	0.7
2004									
Mar Qtr	np	np	0.9	—	4.2	4.3	—	np	0.7
Jan	np	np	0.8	—	3.7	5.0	—	—	0.7
Feb	np	np	0.9	—	4.1	4.2	—	np	0.7
Mar	—	np	1.0	—	4.6	3.9	—	np	0.7
OTHER SENTENCED (RATE PER 100,000 ADULT POPULATION)									
2001 (e)	119.6	76.8	136.4	80.1	179.3	67.9	386.6	60.3	114.8
2002 (e)	118.1	77.4	140.5	84.4	159.3	81.6	404.5	54.0	114.1
2003 (e)	119.2	79.2	142.7	84.6	164.2	92.4	436.2	50.0	116.4
2003									
Mar Qtr(e)	117.3	77.7	138.3	82.7	160.8	81.3	427.1	55.0	113.7
Jun Qtr(e)	118.3	78.8	143.2	83.4	163.7	85.7	451.6	50.1	115.9
Sep Qtr(e)	119.3	79.8	144.7	85.3	164.9	102.2	432.5	46.7	117.2
Dec Qtr(e)	122.0	80.4	144.6	86.9	167.5	100.1	433.7	48.2	118.7
2004									
Mar Qtr	122.5	74.7	140.0	82.8	164.6	97.4	422.2	47.7	115.8
Jan	121.9	76.3	141.6	84.8	164.2	98.2	419.3	48.5	116.4
Feb	121.7	74.3	138.2	81.3	165.1	96.5	422.2	48.1	115.0
Mar	124.1	73.5	140.3	82.3	164.7	97.4	425.1	46.4	116.0

— nil or rounded to zero (including null cells)

np not available for publication but included in totals where applicable, unless otherwise indicated

(a) Data for NSW exclude ACT prisoners held in NSW prisons.

(b) 2001 data for Qld may be under enumerated — see Explanatory Notes, paragraph 14.

(c) Tasmanian data prior to the September quarter 2003 are under enumerated — see Explanatory Notes, paragraph 12.

(d) Data for ACT include ACT prisoners held in ACT as well as ACT prisoners held in NSW.

(e) Figures for the quarter and year for first day of month counts are calculated as a simple average — see Explanatory Notes, paragraph 5.

IMPRISONMENT RATES, by legal status and sentence type *continued*

	NSW(a)	Vic.	Qld(b)	SA	WA	Tas.(c)	NT	ACT(d)	Aust.(b)(c)
TOTAL SENTENCED (RATE PER 100,000 ADULT POPULATION)									
2001 (e)	119.6	76.8	136.5	80.3	182.8	74.7	401.6	60.8	115.5
2002 (e)	118.2	77.5	141.3	84.5	162.4	85.6	406.7	54.8	114.7
2003 (e)	119.2	79.2	143.5	84.6	168.5	95.3	436.9	50.6	117.0
2003									
Mar Qtr(e)	117.3	77.7	139.1	82.8	166.1	83.3	428.3	55.4	114.4
Jun Qtr(e)	118.3	78.8	143.8	83.5	167.5	87.0	453.1	51.1	116.4
Sep Qtr(e)	119.3	79.9	145.4	85.3	168.8	107.4	432.7	47.5	117.8
Dec Qtr(e)	122.0	80.5	145.4	86.9	171.6	103.5	433.7	48.5	119.3
2004									
Mar Qtr	122.6	74.8	141.0	82.8	168.8	101.7	422.2	47.9	116.5
Jan	121.9	76.4	142.5	84.8	167.9	103.2	419.3	48.5	117.1
Feb	121.7	74.4	139.2	81.3	169.2	100.7	422.2	48.5	115.7
Mar	124.1	73.5	141.2	82.3	169.3	101.3	425.1	46.9	116.7
TOTAL (RATE PER 100,000 ADULT POPULATION)									
2001 (e)	153.1	90.5	169.8	121.7	217.6	91.9	502.9	89.7	144.9
2002 (e)	151.4	93.9	177.2	126.7	195.2	107.3	485.3	77.5	144.9
2003 (e)	155.6	97.5	181.7	126.4	199.0	117.9	527.9	74.1	149.0
2003									
Mar Qtr(e)	153.9	95.3	176.8	125.6	197.2	105.8	518.1	79.1	146.4
Jun Qtr(e)	155.1	97.0	182.7	125.5	198.3	108.9	553.2	71.3	148.7
Sep Qtr(e)	155.5	98.4	183.8	126.6	199.1	130.1	515.3	73.1	149.7
Dec Qtr(e)	158.0	99.2	183.5	128.1	201.5	126.5	525.0	72.8	151.2
2004									
Mar Qtr	161.2	93.2	177.7	123.0	200.4	123.7	526.3	69.8	149.0
Jan	159.6	94.5	177.8	122.8	195.6	119.3	525.6	66.0	148.2
Feb	161.8	93.4	176.8	121.9	202.0	122.6	529.2	70.9	149.2
Mar	162.3	91.8	178.4	124.3	203.5	129.3	524.2	72.5	149.7

(a) Data for NSW exclude ACT prisoners held in NSW prisons.

(b) 2001 data for Qld may be under enumerated — see Explanatory Notes, paragraph 14.

(c) Tasmanian data prior to the September quarter 2003 are under enumerated — see Explanatory Notes, paragraph 12.

(d) Data for ACT include ACT prisoners held in ACT as well as ACT prisoners held in NSW.

(e) Figures for the quarter and year for first day of month counts are calculated as a simple average — see Explanatory Notes, paragraph 5.

SENTENCED RECEPTIONS INTO FULL-TIME CUSTODY, by type of sentence

	NSW(a)	Vic.	Qld	SA	WA	Tas.(b)	NT	ACT in ACT	ACT in NSW(a)	ACT Total	Aust. (a)
FINE DEFAULT ONLY (NUMBER)											
2001	79	8	69	50	757	333	358	72	2	74	1 726
2002	52	5	243	24	671	211	6	107	4	111	1 319
2003	36	21	205	24	733	60	12	71	3	74	1 162
2003											
Mar Qtr	12	1	40	9	197	21	5	23	1	24	308
Jun Qtr	9	3	44	5	157	14	6	17	2	19	255
Sep Qtr	7	5	33	6	191	8	—	15	—	15	265
Dec Qtr	8	12	88	4	188	17	1	16	—	16	334
2004											
Mar Qtr	5	6	82	3	155	6	—	12	—	12	269
Jan	2	1	27	2	69	2	—	2	—	2	105
Feb	—	3	24	1	45	3	—	4	—	4	80
Mar	3	2	31	—	41	1	—	6	—	6	84
OTHER SENTENCED (NUMBER)											
2001	7 895	3 856	6 590	1 261	3 253	475	709	..	144	144	24 039
2002	7 922	4 167	6 530	1 097	2 890	603	770	..	106	106	23 979
2003	6 943	4 018	6 095	1 235	2 925	480	1 025	..	95	95	22 721
2003											
Mar Qtr	1 775	932	1 528	267	772	109	260	..	14	14	5 643
Jun Qtr	1 676	1 095	1 572	325	709	120	238	..	22	22	5 735
Sep Qtr	1 666	1 023	1 509	353	760	136	257	..	29	29	5 704
Dec Qtr	1 826	968	1 486	290	684	115	270	..	30	30	5 639
2004											
Mar Qtr	1 659	878	1 439	256	702	171	279	..	23	23	5 384
Jan	424	211	383	61	220	50	81	..	11	11	1 430
Feb	603	299	496	79	218	65	91	..	6	6	1 851
Mar	632	368	560	116	264	56	107	..	6	6	2 103
TOTAL SENTENCED (NUMBER)											
2001	7 974	3 864	6 659	1 311	4 010	808	1 067	72	146	218	25 765
2002	7 974	4 172	6 773	1 121	3 561	814	776	107	110	217	25 298
2003	6 979	4 039	6 300	1 259	3 658	540	1 037	71	98	169	23 883
2003											
Mar Qtr	1 787	933	1 568	276	969	130	265	23	15	38	5 951
Jun Qtr	1 685	1 098	1 616	330	866	134	244	17	24	41	5 990
Sep Qtr	1 673	1 028	1 542	359	951	144	257	15	29	44	5 969
Dec Qtr	1 834	980	1 574	294	872	132	271	16	30	46	5 973
2004											
Mar Qtr	1 664	884	1 521	259	857	177	279	12	23	35	5 653
Jan	426	212	410	63	289	52	81	2	11	13	1 535
Feb	603	302	520	80	263	68	91	4	6	10	1 931
Mar	635	370	591	116	305	57	107	6	6	12	2 187

.. not applicable

— nil or rounded to zero (including null cells)

(a) Data for NSW include ACT prisoners held in NSW prisons. The ACT in NSW figures are a subset of the NSW figures and are not separately counted in the Australian totals — see Explanatory Notes, paragraph 20.

(b) Tasmanian data prior to January 2004 are under enumerated — see Explanatory Note 12.

INDIGENOUS PERSONS IN FULL-TIME CUSTODY, by sex(a)(b)

	NSW(c)	Vic.	Qld(d)	SA	WA	Tas.	NT	ACT in ACT(e)	ACT in NSW(c)	ACT Total(f)	Aust. (c) (d)
MALES (NUMBER ON FIRST DAY OF MONTH)											
2001(g)	1 077	132	1 005	212	923	41	416	9	8	17	3 814
2002(g)	1 218	145	1 097	227	814	55	445	7	12	19	4 006
2003(g)	1 324	159	1 123	230	927	53	555	8	11	19	4 380
2003											
Mar Qtr(g)	1 289	148	1 093	230	896	52	524	9	13	22	4 241
Jun Qtr(g)	1 323	152	1 114	223	925	48	580	8	12	20	4 374
Sep Qtr(g)	1 326	166	1 130	226	929	55	544	9	9	18	4 384
Dec Qtr(g)	1 358	169	1 156	242	959	58	571	7	10	17	4 520
2004											
Mar Qtr	1 416	163	1 160	242	992	51	576	6	11	16	4 605
Jan	1 399	163	1 164	246	963	51	567	3	11	14	4 556
Feb	1 415	158	1 150	239	999	51	583	5	11	16	4 600
Mar	1 433	168	1 166	242	1 013	52	577	9	10	19	4 660
FEMALES (NUMBER ON FIRST DAY OF MONTH)											
2001(g)	134	14	79	17	96	2	11	1	3	4	354
2002(g)	140	16	87	21	74	5	12	1	2	3	356
2003(g)	145	13	87	21	92	5	14	—	1	1	377
2003											
Mar Qtr(g)	138	15	87	21	95	4	13	1	2	3	374
Jun Qtr(g)	145	12	86	15	88	3	17	—	1	1	367
Sep Qtr(g)	152	13	88	24	90	5	14	—	1	1	386
Dec Qtr(g)	147	12	86	24	95	6	11	—	—	—	383
2004											
Mar Qtr	169	11	77	17	98	6	9	—	—	—	388
Jan	156	10	83	18	95	5	8	—	—	—	375
Feb	173	10	73	18	101	7	6	—	—	—	388
Mar	178	14	76	16	98	7	12	—	—	—	401
PERSONS (NUMBER ON FIRST DAY OF MONTH)											
2001(g)	1 211	146	1 083	230	1 019	43	427	10	11	21	4 168
2002(g)	1 357	161	1 184	248	887	60	457	8	14	22	4 362
2003(g)	1 469	172	1 210	251	1 019	58	569	9	12	20	4 757
2003											
Mar Qtr(g)	1 427	163	1 180	251	991	56	537	10	14	24	4 615
Jun Qtr(g)	1 468	165	1 201	239	1 014	51	597	8	13	21	4 741
Sep Qtr(g)	1 477	179	1 217	250	1 019	61	558	9	10	19	4 769
Dec Qtr(g)	1 506	181	1 242	266	1 054	64	583	7	10	17	4 903
2004											
Mar Qtr	1 585	174	1 237	260	1 090	58	584	6	11	16	4 993
Jan	1 555	173	1 247	264	1 058	56	575	3	11	14	4 931
Feb	1 588	168	1 223	257	1 100	58	589	5	11	16	4 988
Mar	1 611	182	1 242	258	1 111	59	589	9	10	19	5 061

— nil or rounded to zero (including null cells)

(a) Persons in custody are asked their Indigenous status during reception into custody — see Explanatory Notes, paragraphs 18–19.

(b) For interpretation of Indigenous statistics — see Explanatory Notes, paragraphs 32–36.

(c) Data for NSW include ACT prisoners held in NSW prisons. The ACT in NSW figures are a subset of the NSW figures and are not separately counted in the Australian totals — see Explanatory Notes, paragraph 20.

(d) Qld data prior to March quarter 2002 may be under enumerated — see Explanatory Notes paragraph 14.

(e) Refers to unsentenced persons in ACT prison custody and may include some sentenced fine default only prisoners — see Explanatory Notes paragraph 20.

(f) ACT in ACT figures and ACT in NSW figures may not add to ACT total due to rounding.

(g) Figures for the quarter and year for first day of the month counts are calculated as a simple average — see Explanatory Notes, paragraph 5.

INDIGENOUS IMPRISONMENT RATES (a)(b)(c)

	NSW(d)	Vic.	Qld(e)	SA	WA	Tas.	NT	ACT	Aust.(e)
MALES (RATE PER 100,000 ADULT INDIGENOUS POPULATION)									
2001 (f)	3 420.7	1 889.9	3 154.6	3 395.5	5 611.1	np	2 580.3	np	3 335.7
2002 (f)	3 762.2	2 029.9	3 354.7	3 555.4	4 829.9	np	2 742.1	np	3 428.6
2003 (f)	4 000.3	2 173.0	3 338.6	3 536.0	5 381.0	np	3 353.8	np	3 658.8
2003									
Mar Qtr(f)	3 888.3	2 023.4	3 249.4	3 536.0	5 199.6	np	3 166.9	np	3 542.9
Jun Qtr(f)	3 993.9	2 087.3	3 311.8	3 428.5	5 369.9	np	3 507.4	np	3 654.3
Sep Qtr(f)	4 010.2	2 270.0	3 357.4	3 464.3	5 389.2	np	3 287.8	np	3 662.1
Dec Qtr(f)	4 108.7	2 311.1	3 435.7	3 715.1	5 565.2	np	3 453.0	np	3 776.0
2004									
Mar Qtr	4 181.3	2 193.8	3 354.8	3 651.2	5 620.7	np	3 386.9	np	3 753.8
Jan	4 130.7	2 193.8	3 366.4	3 706.5	5 458.3	np	3 335.9	np	3 713.6
Feb	4 178.3	2 126.5	3 325.9	3 601.0	5 662.3	np	3 430.0	np	3 749.5
Mar	4 234.9	2 261.1	3 372.2	3 646.2	5 741.7	np	3 394.7	np	3 798.4
FEMALES (RATE PER 100,000 ADULT INDIGENOUS POPULATION)									
2001 (f)	385.8	195.0	226.8	244.6	548.5	np	65.6	np	287.4
2002 (f)	395.1	220.9	245.0	291.0	410.5	np	71.8	np	283.1
2003 (f)	406.5	178.8	237.4	277.9	501.3	np	80.3	np	292.7
2003									
Mar Qtr(f)	382.6	206.9	237.9	274.5	516.7	np	75.4	np	289.9
Jun Qtr(f)	404.2	166.4	236.1	203.7	480.4	np	98.6	np	284.8
Sep Qtr(f)	424.8	175.4	239.7	318.8	489.5	np	81.2	np	299.2
Dec Qtr(f)	414.5	166.4	236.1	314.4	518.5	np	65.8	np	296.9
2004									
Mar Qtr	464.7	150.6	206.2	224.3	518.5	np	np	np	293.9
Jan	428.9	132.9	221.3	232.9	502.6	np	np	np	284.0
Feb	475.7	132.9	194.7	232.9	534.4	np	np	np	293.9
Mar	489.4	186.1	202.7	207.0	518.5	np	68.1	np	303.7
PERSONS (RATE PER 100,000 ADULT INDIGENOUS POPULATION)									
2001 (f)	1 839.4	1 029.7	1 629.6	1 717.5	2 997.8	459.9	1 293.4	np	1 754.0
2002 (f)	2 009.6	1 116.6	1 735.1	1 809.1	2 548.9	635.5	1 377.3	np	1 797.2
2003 (f)	2 132.0	1 168.2	1 723.5	1 789.3	2 862.1	598.2	1 683.6	np	1 913.6
2003									
Mar Qtr(f)	2 065.8	1 108.2	1 681.0	1 787.5	2 782.3	576.6	1 589.6	np	1 856.4
Jun Qtr(f)	2 127.7	1 119.5	1 709.9	1 699.7	2 845.9	524.8	1 768.2	np	1 907.3
Sep Qtr(f)	2 146.2	1 214.7	1 733.7	1 778.0	2 860.0	628.4	1 651.8	np	1 918.6
Dec Qtr(f)	2 188.2	1 230.5	1 769.3	1 891.9	2 960.1	662.9	1 724.8	np	1 972.2
2004									
Mar Qtr	2 249.5	1 165.8	1 716.7	1 807.6	2 981.8	583.0	1 687.4	np	1 960.3
Jan	2 206.6	1 156.9	1 730.1	1 837.8	2 895.1	566.1	1 660.4	np	1 935.8
Feb	2 253.8	1 123.4	1 696.8	1 789.1	3 010.1	586.3	1 700.8	np	1 958.2
Mar	2 288.1	1 217.1	1 723.2	1 796.0	3 040.2	596.4	1 700.8	np	1 986.9

np not available for publication but included in totals where applicable, unless otherwise indicated

(a) Some rates in this table have not been published — see Explanatory Notes, paragraph 25.

(b) Persons in custody are asked their Indigenous status during reception into custody — see Explanatory Notes paragraphs 18–19.

(c) For interpretation of Indigenous statistics — see Explanatory Notes, paragraphs 32–36.

(d) Data for NSW exclude ACT prisoners held in NSW prisons.

(e) Qld data prior to March quarter 2002 may be under enumerated — see Explanatory Notes, paragraph 14.

(f) Figures for the quarter and year for first day of the month counts are calculated as a simple average — see Explanatory Notes, paragraph 5.

	NSW(d)	Vic.	Qld(e)	SA	WA	Tas.	NT	ACT	Aust.(e)
MALES									
2001(f)	13.7	11.4	12.4	17.1	20.0	np	5.8	np	14.8
2002(f)	15.5	11.8	12.8	17.2	18.8	np	7.4	np	15.3
2003(f)	16.2	12.2	12.3	17.3	21.6	np	12.3	np	16.0
2003									
Mar Qtr(f)	15.9	11.7	12.3	17.3	21.0	np	10.4	np	15.8
Jun Qtr(f)	16.3	11.8	12.1	16.8	21.6	np	12.5	np	16.1
Sep Qtr(f)	16.2	12.7	12.2	16.9	21.6	np	12.7	np	15.9
Dec Qtr(f)	16.4	12.7	12.6	18.1	22.4	np	13.9	np	16.4
2004									
Mar Qtr	16.5	12.9	12.7	18.6	23.1	np	13.7	np	16.6
Jan	16.4	12.7	12.8	18.9	22.9	np	12.9	np	16.5
Feb	16.5	12.4	12.7	18.5	23.0	np	14.0	np	16.6
Mar	16.7	13.5	12.8	18.4	23.3	np	14.4	np	16.8
FEMALES									
2001(f)	26.6	16.6	14.7	22.0	30.8	np	4.7	np	20.8
2002(f)	28.0	17.8	14.4	25.7	23.3	np	4.4	np	20.0
2003(f)	28.2	13.5	13.1	22.9	28.0	np	5.5	np	19.8
2003									
Mar Qtr(f)	26.0	15.3	13.6	25.0	29.1	np	5.2	np	19.5
Jun Qtr(f)	27.6	12.2	12.9	16.5	27.6	np	6.2	np	19.0
Sep Qtr(f)	30.5	13.5	13.0	25.0	26.9	np	5.3	np	20.4
Dec Qtr(f)	28.9	13.2	13.2	25.1	28.2	np	5.3	np	20.3
2004									
Mar Qtr	31.0	13.0	12.2	18.8	29.7	np	np	np	20.5
Jan	29.7	11.5	13.2	20.7	29.4	np	np	np	20.3
Feb	31.2	11.3	11.4	20.1	31.2	np	np	np	20.3
Mar	31.9	16.4	12.0	16.0	28.7	np	4.7	np	20.8
PERSONS									
2001(f)	14.1	11.8	12.2	16.7	20.1	5.6	5.1	np	14.8
2002(f)	15.9	12.4	12.5	17.0	18.6	6.8	6.7	np	15.3
2003(f)	16.6	12.5	12.0	16.8	21.6	5.7	10.9	np	16.0
2003									
Mar Qtr(f)	16.2	12.1	12.1	17.0	21.1	6.2	9.3	np	15.8
Jun Qtr(f)	16.6	12.0	11.8	16.0	21.6	5.4	11.1	np	16.0
Sep Qtr(f)	16.7	12.9	12.0	16.7	21.5	5.4	11.3	np	15.9
Dec Qtr(f)	16.8	13.0	12.3	17.7	22.3	5.9	12.3	np	16.3
2004									
Mar Qtr	17.0	13.1	12.4	17.7	23.0	5.3	11.9	np	16.6
Jan	16.8	12.8	12.5	18.1	22.8	5.3	11.1	np	16.4
Feb	17.0	12.6	12.3	17.7	23.0	5.4	12.0	np	16.5
Mar	17.2	13.9	12.4	17.3	23.1	5.1	12.6	np	16.8

np not available for publication but included in totals where applicable, unless otherwise indicated

(a) Some ratios in this table have not been published — see Explanatory Notes, paragraph 25.

(b) Persons in custody are asked their Indigenous status during reception into custody — see Explanatory Notes paragraphs 18–19.

(c) For interpretation of Indigenous statistics — see Explanatory Notes, paragraphs 32–36.

(d) Data for NSW exclude ACT prisoners held in NSW prisons.

(e) Qld data prior to March quarter 2002 may be under enumerated — see Explanatory Notes, paragraph 14.

(f) Figures for the quarter and year for first day of the month counts are calculated as a simple average — see Explanatory Notes, paragraph 5.

	NSW(c)	Vic.	Qld(d)	SA	WA	Tas.	NT	ACT in ACT(e)	ACT in NSW(c)	ACT Total(f)	Aust. (c) (d)
UNSENTENCED (NUMBER ON FIRST DAY OF MONTH)											
2001	250	32	173	85	159	12	86	10	1	10	807
2002	290	35	199	92	146	15	83	8	—	9	866
2003	333	40	214	89	165	11	100	9	—	9	961
2003											
Mar Qtr	330	42	204	96	168	10	95	10	—	10	956
Jun Qtr	343	38	218	88	166	9	115	8	—	8	985
Sep Qtr	337	40	214	84	166	13	89	9	—	9	952
Dec Qtr	322	38	219	88	161	14	102	7	—	7	951
2004											
Mar Qtr	362	41	248	96	184	14	112	6	—	6	1 062
Jan	361	41	235	89	168	11	110	3	—	3	1 018
Feb	381	40	257	99	194	15	118	5	—	5	1 109
Mar	343	42	252	99	189	16	108	9	—	9	1 058
SENTENCED—FINE DEFAULT ONLY (NUMBER ON FIRST DAY OF MONTH)											
2001	—	—	—	—	30	1	15	—	—	—	47
2002	—	—	3	—	28	1	1	—	—	—	33
2003	—	—	3	—	39	1	—	—	—	—	43
2003											
Mar Qtr	—	—	2	—	47	—	—	—	—	—	49
Jun Qtr	1	—	2	—	35	—	1	—	1	1	39
Sep Qtr	—	—	5	—	32	1	—	—	—	—	39
Dec Qtr	—	—	4	—	40	1	—	—	—	—	44
2004											
Mar Qtr	—	—	6	—	35	—	—	—	—	—	42
Jan	—	—	4	—	39	—	—	—	—	—	43
Feb	1	—	8	—	29	—	—	—	—	—	38
Mar	—	—	7	—	37	1	—	—	—	—	45
OTHER SENTENCED (NUMBER ON FIRST DAY OF MONTH)											
2001	961	114	910	144	830	31	326	—	11	11	3 315
2002	1 067	126	982	156	714	45	373	—	13	13	3 463
2003	1 136	132	993	162	816	46	468	—	12	12	3 753
2003											
Mar Qtr	1 097	121	974	154	776	45	442	—	14	14	3 610
Jun Qtr	1 124	127	980	151	812	42	481	—	12	12	3 718
Sep Qtr	1 140	138	999	166	820	47	469	—	10	10	3 778
Dec Qtr	1 183	143	1 019	178	854	49	481	—	10	10	3 908
2004											
Mar Qtr	1 223	133	983	164	871	43	472	—	11	11	3 890
Jan	1 194	132	1 008	175	851	45	465	—	11	11	3 870
Feb	1 206	128	958	158	877	43	471	—	11	11	3 841
Mar	1 268	140	983	159	885	42	481	—	10	10	3 958

— nil or rounded to zero (including null cells)

- (a) Persons in custody are asked their Indigenous status during reception into custody — see Explanatory Notes paragraphs 18–19.
- (b) For interpretation of Indigenous statistics — see Explanatory Notes, paragraphs 32–36.
- (c) Data for NSW include ACT prisoners held in NSW prisons. The ACT in NSW figures are a subset of the NSW figures and are not separately counted in the Australian totals — see Explanatory Notes, paragraph 20.
- (d) Qld data prior to March quarter 2002 may be underenumerated — see Explanatory Notes, paragraph 14.
- (e) Refers to unsentenced persons in ACT prison custody and may include some sentenced fine default only prisoners — see Explanatory Notes, paragraph 20.
- (f) ACT in ACT figures and ACT in NSW figures may not add to the ACT total due to rounding.

continued

	NSW(c)	Vic.	Qld(d)	SA	WA	Tas.	NT	ACT in ACT(e)	ACT in NSW(c)	ACT Total(f)	Aust. (c)(d)
TOTAL SENTENCED (NUMBER ON FIRST DAY OF MONTH)											
2001	961	114	910	144	860	32	341	—	11	11	3 361
2002	1 067	126	985	156	742	45	374	—	13	14	3 496
2003	1 136	132	996	162	854	46	468	—	12	12	3 796
2003											
Mar Qtr	1 097	121	976	155	823	45	442	—	14	14	3 659
Jun Qtr	1 125	127	982	151	847	42	482	—	13	13	3 757
Sep Qtr	1 140	138	1 004	166	852	48	469	—	10	10	3 817
Dec Qtr	1 184	143	1 023	178	894	50	481	—	10	10	3 952
2004											
Mar Qtr	1 223	133	989	164	906	44	472	—	11	11	3 932
Jan	1 194	132	1 012	175	890	45	465	—	11	11	3 913
Feb	1 207	128	966	158	906	43	471	—	11	11	3 879
Mar	1 268	140	990	159	922	43	481	—	10	10	4 003
TOTAL (NUMBER ON FIRST DAY OF MONTH)											
2001	1 211	146	1 083	230	1 019	43	427	10	11	21	4 168
2002	1 357	161	1 184	248	887	60	457	8	14	22	4 362
2003	1 469	172	1 210	251	1 019	58	569	9	12	20	4 757
2003											
Mar Qtr	1 427	163	1 180	251	991	56	537	10	14	24	4 615
Jun Qtr	1 468	165	1 201	239	1 014	51	597	8	13	21	4 741
Sep Qtr	1 477	179	1 217	250	1 019	61	558	9	10	19	4 769
Dec Qtr	1 506	181	1 242	266	1 054	64	583	7	10	17	4 903
2004											
Mar Qtr	1 585	174	1 237	260	1 090	58	584	6	11	16	4 993
Jan	1 555	173	1 247	264	1 058	56	575	3	11	14	4 931
Feb	1 588	168	1 223	257	1 100	58	589	5	11	16	4 988
Mar	1 611	182	1 242	258	1 111	59	589	9	10	19	5 061

— nil or rounded to zero (including null cells)

(a) Persons in custody are asked their Indigenous status during reception into custody — see Explanatory Notes paragraphs 18–19.

(b) For interpretation of Indigenous statistics — see Explanatory Notes, paragraphs 32–36.

(c) Data for NSW include ACT prisoners held in NSW prisons. The ACT in NSW figures are a subset of the NSW figures and are not separately counted in the Australian totals — see Explanatory Notes, paragraph 20.

(d) Qld data prior to March quarter 2002 may be underenumerated — see Explanatory Notes, paragraph 14.

(e) Refers to unsentenced persons in ACT prison custody and may include some sentenced fine default only prisoners — see Explanatory Notes, paragraph 20.

(f) ACT in ACT figures and ACT in NSW figures may not add to the ACT total due to rounding.

INDIGENOUS IMPRISONMENT RATES, by legal status and sentence type(a)(b)(c)

	NSW(d)	Vic.	Qld(e)	SA	WA	Tas.	NT	ACT	Aust.(e)
UNSENTENCED (RATE PER 100,000 ADULT INDIGENOUS POPULATION)									
2001 (f)	382.9	225.0	260.3	638.8	466.8	124.3	261.4	np	339.5
2002 (f)	433.1	241.0	291.4	669.5	418.7	153.8	249.3	np	356.9
2003 (f)	486.9	269.1	304.5	632.6	464.2	118.3	297.2	np	386.5
2003									
Mar Qtr(f)	482.2	287.8	290.5	686.0	471.7	107.0	281.2	np	384.4
Jun Qtr(f)	501.2	256.1	310.9	624.3	467.0	np	341.4	np	396.1
Sep Qtr(f)	493.4	274.2	304.3	595.8	467.0	131.2	264.4	np	383.1
Dec Qtr(f)	471.0	258.3	312.4	624.3	451.1	145.0	301.9	np	382.4
2004									
Mar Qtr	516.9	274.2	344.1	666.0	502.6	141.5	323.4	np	416.8
Jan	515.9	274.2	326.0	619.6	459.7	111.2	317.6	np	399.7
Feb	544.5	267.5	356.6	689.2	530.9	151.6	340.7	np	435.4
Mar	490.2	280.9	349.6	689.2	517.2	161.7	311.9	np	415.4
SENTENCED—FINE DEFAULT ONLY (RATE PER 100,000 ADULT INDIGENOUS POPULATION)									
2001 (f)	—	—	—	—	89.2	np	44.5	np	19.6
2002 (f)	—	—	np	—	79.5	np	np	np	13.5
2003 (f)	—	—	np	—	108.1	np	—	np	17.2
2003									
Mar Qtr(f)	—	—	np	—	132.0	—	—	np	19.8
Jun Qtr(f)	np	—	np	—	99.2	—	np	np	15.7
Sep Qtr(f)	—	—	np	—	89.8	np	—	np	15.6
Dec Qtr(f)	—	—	np	—	111.4	np	—	np	17.8
2004									
Mar Qtr	—	—	np	—	95.8	—	—	np	16.5
Jan	—	—	np	—	106.7	—	—	np	16.9
Feb	np	—	np	—	79.4	—	—	np	14.9
Mar	—	—	np	—	101.2	np	—	np	17.7
OTHER SENTENCED (RATE PER 100,000 ADULT INDIGENOUS POPULATION)									
2001 (f)	1 456.2	804.1	1 368.9	1 077.5	2 441.8	327.6	987.5	np	1 395.0
2002 (f)	1 576.5	875.6	1 439.6	1 139.0	2 050.7	473.8	1 123.7	np	1 426.8
2003 (f)	1 644.8	899.1	1 414.4	1 156.1	2 289.8	474.8	1 385.6	np	1 509.9
2003									
Mar Qtr(f)	1 583.6	820.4	1 387.6	1 099.1	2 178.7	469.6	1 308.4	np	1 452.1
Jun Qtr(f)	1 626.5	863.4	1 396.1	1 075.3	2 279.7	435.1	1 423.8	np	1 495.5
Sep Qtr(f)	1 652.3	940.5	1 422.3	1 182.2	2 303.1	483.4	1 387.3	np	1 519.9
Dec Qtr(f)	1 716.7	972.2	1 451.7	1 267.6	2 397.7	511.0	1 422.8	np	1 572.0
2004									
Mar Qtr	1 732.1	891.6	1 363.8	1 141.7	2 383.4	438.1	1 363.9	np	1 527.0
Jan	1 690.7	882.7	1 398.5	1 218.2	2 328.7	454.9	1 342.8	np	1 519.3
Feb	1 707.8	856.0	1 329.1	1 099.9	2 399.8	434.7	1 360.1	np	1 507.9
Mar	1 797.9	936.2	1 363.8	1 106.9	2 421.7	424.6	1 389.0	np	1 553.9

— nil or rounded to zero (including null cells)

np not available for publication but included in totals where applicable, unless otherwise indicated

(a) Some rates in this table have not been published — see Explanatory Notes, paragraph 25.

(b) Persons in custody are asked their Indigenous status during reception into custody — see Explanatory Notes paragraphs 18–19.

(c) For interpretation of Indigenous statistics — see Explanatory Notes, paragraphs 32–36.

(d) Data for NSW exclude ACT prisoners held in NSW prisons.

(e) Qld data prior to March quarter 2002 may be under enumerated — see Explanatory Notes, paragraph 14.

(f) Figures for the quarter and year for first day of the month counts are calculated as a simple average — see Explanatory Notes, paragraph 5.

	NSW(d)	Vic.	Qld(e)	SA	WA	Tas.	NT	ACT	Aust. (e)
.....									
TOTAL SENTENCED (RATE PER 100,000 ADULT INDIGENOUS POPULATION)									
2001 (f)	1 456.6	804.6	1 369.3	1 078.7	2 531.0	335.6	1 032.0	np	1 414.5
2002 (f)	1 576.5	875.6	1 443.7	1 139.6	2 130.2	481.7	1 128.0	np	1 440.3
2003 (f)	1 645.0	899.1	1 418.9	1 156.6	2 397.9	479.9	1 386.3	np	1 527.1
2003									
Mar Qtr(f)	1 583.6	820.4	1 390.5	1 101.5	2 310.6	469.6	1 308.4	np	1 471.9
Jun Qtr(f)	1 626.5	863.4	1 399.0	1 075.3	2 378.9	435.1	1 426.8	np	1 511.2
Sep Qtr(f)	1 652.8	940.5	1 429.4	1 182.2	2 393.0	497.2	1 387.3	np	1 535.5
Dec Qtr(f)	1 717.2	972.2	1 456.9	1 267.6	2 509.0	517.9	1 422.8	np	1 589.8
2004									
Mar Qtr	1 732.6	891.6	1 372.6	1 141.7	2 479.2	441.4	1 363.9	np	1 543.5
Jan	1 690.7	882.7	1 404.1	1 218.2	2 435.4	454.9	1 342.8	np	1 536.2
Feb	1 709.3	856.0	1 340.2	1 099.9	2 479.2	434.7	1 360.1	np	1 522.8
Mar	1 797.9	936.2	1 373.5	1 106.9	2 523.0	434.7	1 389.0	np	1 571.5
.....									
TOTAL (RATE PER 100,000 ADULT INDIGENOUS POPULATION)									
2001 (f)	1 839.4	1 029.7	1 629.6	1 717.5	2 997.8	459.9	1 293.4	np	1 754.0
2002 (f)	2 009.6	1 116.6	1 735.1	1 809.1	2 548.9	635.5	1 377.3	np	1 797.2
2003 (f)	2 132.0	1 168.2	1 723.5	1 789.3	2 862.1	598.2	1 683.6	np	1 913.6
2003									
Mar Qtr(f)	2 065.8	1 108.2	1 681.0	1 787.5	2 782.3	576.6	1 589.6	np	1 856.4
Jun Qtr(f)	2 127.7	1 119.5	1 709.9	1 699.7	2 845.9	524.8	1 768.2	np	1 907.3
Sep Qtr(f)	2 146.2	1 214.7	1 733.7	1 778.0	2 860.0	628.4	1 651.8	np	1 918.6
Dec Qtr(f)	2 188.2	1 230.5	1 769.3	1 891.9	2 960.1	662.9	1 724.8	np	1 972.2
2004									
Mar Qtr	2 249.5	1 165.8	1 716.7	1 807.6	2 981.8	583.0	1 687.4	np	1 960.3
Jan	2 206.6	1 156.9	1 730.1	1 837.8	2 895.1	566.1	1 660.4	np	1 935.8
Feb	2 253.8	1 123.4	1 696.8	1 789.1	3 010.1	586.3	1 700.8	np	1 958.2
Mar	2 288.1	1 217.1	1 723.2	1 796.0	3 040.2	596.4	1 700.8	np	1 986.9

np not available for publication but included in totals where applicable, unless otherwise indicated

(a) Some rates in this table have not been published — see Explanatory Notes, paragraph 25.

(b) Persons in custody are asked their Indigenous status during reception into custody — see Explanatory Notes paragraphs 18–19.

(c) For interpretation of Indigenous statistics — see Explanatory Notes, paragraphs 32–36.

(d) Data for NSW exclude ACT prisoners held in NSW prisons.

(e) Qld data prior to March quarter 2002 may be under enumerated — see Explanatory Notes, paragraph 14.

(f) Figures for the quarter and year for first day of the month counts are calculated as a simple average — see Explanatory Notes, paragraph 5.

PERSONS IN PERIODIC DETENTION, by sex

	NSW	ACT	Aust. (a)
MALES (AVERAGE DAILY NUMBER)			
2001	974	66	1 040
2002	831	66	897
2003	739	73	811
2003			
Mar Qtr	782	68	850
Jun Qtr	767	71	839
Sep Qtr	710	72	781
Dec Qtr	697	79	776
2004			
Mar Qtr	676	87	763
Jan	688	85	773
Feb	668	87	755
Mar	674	88	762
FEMALES (AVERAGE DAILY NUMBER)			
2001	87	4	91
2002	68	4	72
2003	60	4	64
2003			
Mar Qtr	62	5	67
Jun Qtr	62	4	66
Sep Qtr	57	3	60
Dec Qtr	60	3	63
2004			
Mar Qtr	56	2	58
Jan	58	2	60
Feb	57	2	59
Mar	55	2	57
PERSONS (AVERAGE DAILY NUMBER)			
2001	1 061	70	1 130
2002	899	70	969
2003	799	76	875
2003			
Mar Qtr	844	73	918
Jun Qtr	830	75	905
Sep Qtr	767	75	842
Dec Qtr	757	81	838
2004			
Mar Qtr	733	89	822
Jan	745	87	832
Feb	724	89	813
Mar	729	90	819

(a) Periodic detention is a form of custody only used in NSW and the ACT.

	NSW	ACT	Aust. (a)
.....			
MALES (RATE PER 100,000 ADULT POPULATION)			
2001	40.1	56.5	14.3
2002	33.7	55.5	12.2
2003	29.7	60.7	10.9
2003			
Mar Qtr	31.5	57.4	11.5
Jun Qtr	30.9	59.9	11.3
Sep Qtr	28.4	59.9	10.5
Dec Qtr	27.9	65.5	10.4
2004			
Mar Qtr	27.0	72.2	10.2
Jan	27.4	70.9	10.3
Feb	26.6	72.4	10.1
Mar	26.9	73.2	10.2
.....			
FEMALES (RATE PER 100,000 ADULT POPULATION)			
2001	3.5	np	1.2
2002	2.7	np	1.0
2003	2.3	np	0.8
2003			
Mar Qtr	2.4	np	0.9
Jun Qtr	2.4	np	0.9
Sep Qtr	2.2	np	0.8
Dec Qtr	2.3	np	0.8
2004			
Mar Qtr	2.2	np	0.8
Jan	2.2	np	0.8
Feb	2.2	np	0.8
Mar	2.1	np	0.7
.....			
PERSONS (RATE PER 100,000 ADULT POPULATION)			
2001	21.5	29.6	7.7
2002	17.9	29.0	6.5
2003	15.8	31.1	5.8
2003			
Mar Qtr	16.7	30.1	6.1
Jun Qtr	16.4	30.8	6.0
Sep Qtr	15.1	30.6	5.5
Dec Qtr	14.9	33.1	5.5
2004			
Mar Qtr	14.4	36.1	5.4
Jan	14.6	35.5	5.5
Feb	14.2	36.3	5.3
Mar	14.3	36.7	5.4

np not available for publication but included in totals where applicable, unless otherwise indicated

(a) Periodic detention is a form of custody only used in NSW and the ACT.

	NSW	Vic.	Qld	SA	WA	Tas.	NT	ACT	Aust.
MALES (NUMBER ON FIRST DAY OF MONTH)									
2001(a)	293	84	68	19	138	3	105	6	717
2002(a)	299	77	63	19	138	4	88	4	692
2003(a)	305	73	72	18	112	5	31	3	619
2003									
Mar Qtr(a)	299	74	59	18	130	4	45	3	633
Jun Qtr(a)	304	70	74	18	115	4	40	3	628
Sep Qtr(a)	307	72	79	20	108	6	22	3	617
Dec Qtr(a)	311	77	74	16	95	7	16	3	599
2004									
Mar Qtr	315	75	77	13	97	4	14	3	597
Jan	316	78	76	13	94	4	14	3	598
Feb	312	75	79	13	96	4	14	3	596
Mar	316	73	77	12	100	3	13	3	597
FEMALES (NUMBER ON FIRST DAY OF MONTH)									
2001(a)	31	6	16	4	16	1	1	—	75
2002(a)	32	8	13	3	14	1	3	1	75
2003(a)	30	8	15	4	11	2	3	1	74
2003									
Mar Qtr(a)	34	9	13	4	12	1	4	1	79
Jun Qtr(a)	29	8	17	5	11	3	3	1	78
Sep Qtr(a)	27	8	15	3	10	2	2	1	68
Dec Qtr(a)	28	8	15	2	11	2	4	1	71
2004									
Mar Qtr	33	9	8	1	12	4	3	1	70
Jan	30	9	8	1	11	4	3	1	67
Feb	32	9	7	1	13	5	3	1	71
Mar	36	8	8	1	13	3	3	1	73
PERSONS (NUMBER ON FIRST DAY OF MONTH)									
2001(a)	324	90	84	24	154	4	105	7	792
2002(a)	331	85	77	22	152	5	91	5	767
2003(a)	335	82	87	22	123	7	34	4	693
2003									
Mar Qtr(a)	334	84	72	23	142	5	49	4	712
Jun Qtr(a)	334	78	92	23	126	7	43	4	705
Sep Qtr(a)	335	80	94	23	117	8	24	4	684
Dec Qtr(a)	339	85	89	18	106	9	20	4	669
2004									
Mar Qtr	347	84	85	14	109	8	17	4	667
Jan	346	87	84	14	105	8	17	4	665
Feb	344	84	86	14	109	9	17	4	667
Mar	352	81	85	13	113	6	16	4	670

— nil or rounded to zero (including null cells)

(a) Figures for the quarter and year for the first day of the month counts are calculated as a simple average — see Explanatory Notes, paragraph 5.

PERSONS IN COMMUNITY-BASED CORRECTIONS, by sex(a)

	NSW	Vic.	Qld	SA	WA	Tas.	NT	ACT	Aust.
MALES (NUMBER ON FIRST DAY OF MONTH)									
2001(b)	15 155	5 306	13 027	5 064	4 030	787	1 054	1 092	45 515
2002(b)	14 656	5 430	11 061	5 403	4 177	726	818	1 036	43 306
2003(b)	14 436	6 100	9 239	5 016	3 936	762	859	989	41 337
2003									
Mar Qtr(b)	14 585	5 964	9 406	4 949	4 039	703	845	1 016	41 508
Jun Qtr(b)	14 558	6 026	9 301	5 312	3 899	764	845	1 014	41 720
Sep Qtr(b)	14 372	6 076	9 159	4 931	3 897	777	863	963	41 039
Dec Qtr(b)	14 228	6 333	9 090	4 872	3 910	804	882	961	41 081
2004									
Mar Qtr	14 099	6 268	9 012	4 793	3 955	802	903	963	40 795
Jan	13 984	6 454	8 949	4 756	3 942	809	899	936	40 729
Feb	14 128	6 255	8 989	4 783	3 953	808	905	978	40 799
Mar	14 184	6 096	9 098	4 840	3 971	790	905	974	40 858
FEMALES (NUMBER ON FIRST DAY OF MONTH)									
2001(b)	2 679	1 124	3 358	1 270	1 201	165	141	238	10 176
2002(b)	2 590	1 205	2 908	1 311	1 164	171	90	194	9 632
2003(b)	2 533	1 325	2 431	1 158	1 181	176	108	167	9 080
2003									
Mar Qtr(b)	2 581	1 260	2 481	1 197	1 205	177	98	166	9 165
Jun Qtr(b)	2 561	1 271	2 413	1 169	1 186	183	107	171	9 061
Sep Qtr(b)	2 518	1 343	2 397	1 144	1 171	173	108	169	9 024
Dec Qtr(b)	2 472	1 427	2 433	1 121	1 162	172	118	163	9 068
2004									
Mar Qtr	2 440	1 376	2 432	1 068	1 159	170	125	163	8 934
Jan	2 448	1 440	2 414	1 068	1 166	169	126	156	8 987
Feb	2 443	1 363	2 419	1 058	1 156	169	125	168	8 901
Mar	2 428	1 326	2 463	1 078	1 156	173	125	166	8 915
PERSONS (NUMBER ON FIRST DAY OF MONTH) (c)									
2001(b)	17 958	6 563	16 385	6 386	5 232	952	1 195	1 330	56 000
2002(b)	17 340	6 755	13 969	6 764	5 341	896	908	1 230	53 203
2003(b)	17 104	7 619	11 670	6 215	5 117	939	967	1 156	50 787
2003									
Mar Qtr(b)	17 312	7 373	11 887	6 173	5 243	881	944	1 181	50 993
Jun Qtr(b)	17 270	7 491	11 714	6 561	5 085	947	953	1 186	51 206
Sep Qtr(b)	17 022	7 602	11 557	6 103	5 068	950	971	1 133	50 406
Dec Qtr(b)	16 811	8 011	11 523	6 023	5 072	977	999	1 124	50 541
2004									
Mar Qtr	16 621	7 972	11 444	5 894	5 115	973	1 028	1 126	50 172
Jan	16 517	8 245	11 363	5 855	5 108	978	1 025	1 092	50 183
Feb	16 657	7 942	11 408	5 875	5 109	977	1 030	1 146	50 144
Mar	16 689	7 728	11 561	5 952	5 127	963	1 030	1 140	50 190

(a) With the exception of Victoria and Tasmania, the number of persons in community-based corrections includes those persons with breached or suspended orders — see Explanatory Notes, paragraph 10.

(b) Figures for the quarter and year for first day of the month counts are calculated as a simple average — see Explanatory Notes, paragraph 5.

(c) Includes persons whose sex is unknown.

COMMUNITY-BASED CORRECTIONS RATES, by sex(a)

	NSW	Vic.	Qld	SA	WA	Tas.	NT	ACT	Aust.
MALES (RATE PER 100,000 ADULT POPULATION)									
2001 (b)	624.4	290.3	957.6	901.0	567.9	457.0	1 446.3	940.0	627.9
2002 (b)	594.5	295.5	802.8	949.1	584.7	422.3	1 116.4	875.1	591.0
2003 (b)	579.5	327.7	653.4	872.2	543.3	439.3	1 180.9	826.9	556.2
2003									
Mar Qtr(b)	588.2	322.3	673.0	863.8	561.5	408.0	1 164.0	853.7	562.1
Jun Qtr(b)	585.4	324.5	661.0	925.3	539.7	441.7	1 165.1	850.8	562.9
Sep Qtr(b)	575.2	324.7	645.9	855.4	535.7	447.0	1 194.6	803.0	550.3
Dec Qtr(b)	569.4	339.4	634.1	844.5	536.6	460.2	1 199.6	800.5	549.7
2004									
Mar Qtr	562.8	334.5	624.6	829.0	539.9	457.4	1 226.1	801.1	543.8
Jan	558.2	344.4	620.3	822.6	538.1	461.2	1 220.7	778.9	542.9
Feb	563.9	333.8	623.0	827.3	539.6	460.6	1 228.8	813.8	543.9
Mar	566.2	325.3	630.6	837.1	542.0	450.4	1 228.8	810.5	544.6
FEMALES (RATE PER 100,000 ADULT POPULATION)									
2001 (b)	107.3	59.1	242.8	216.2	169.3	90.4	221.3	200.2	136.7
2002 (b)	101.5	62.3	204.9	220.4	161.0	93.9	136.4	156.7	126.8
2003 (b)	98.2	67.7	166.8	192.9	160.5	96.1	165.0	133.6	117.9
2003									
Mar Qtr(b)	100.5	64.7	171.9	200.1	165.0	97.2	150.4	132.8	119.7
Jun Qtr(b)	99.5	65.1	166.0	195.0	161.6	99.7	164.3	136.9	117.8
Sep Qtr(b)	97.3	68.3	163.6	190.2	158.4	94.0	165.6	134.6	116.7
Dec Qtr(b)	95.7	72.7	165.8	186.4	157.1	93.5	179.5	130.3	117.3
2004									
Mar Qtr	94.2	69.9	164.7	177.3	156.0	92.1	191.0	130.4	115.2
Jan	94.5	73.1	163.5	177.3	156.9	91.3	192.0	124.5	115.8
Feb	94.3	69.2	163.8	175.6	155.5	91.3	190.5	134.1	114.7
Mar	93.8	67.3	166.8	179.0	155.5	93.5	190.5	132.5	114.9
PERSONS (RATE PER 100,000 ADULT POPULATION) (c)									
2001 (b)	364.7	176.0	597.3	555.7	368.5	268.4	873.9	565.9	381.1
2002 (b)	345.6	179.1	499.4	581.1	371.7	253.4	651.9	508.2	356.5
2003 (b)	337.4	199.5	406.4	528.8	350.5	262.9	699.8	472.2	335.6
2003									
Mar Qtr(b)	343.0	194.2	418.4	527.0	361.7	248.1	683.8	484.7	339.0
Jun Qtr(b)	341.2	196.6	409.4	559.1	349.2	265.8	691.0	485.1	339.1
Sep Qtr(b)	334.7	198.1	400.8	518.0	345.6	265.5	705.6	460.8	331.8
Dec Qtr(b)	330.7	209.3	397.2	511.2	345.5	271.9	718.7	458.1	332.5
2004									
Mar Qtr	326.2	207.4	392.0	499.3	346.6	269.8	738.4	458.8	328.8
Jan	324.2	214.5	389.2	496.0	346.1	271.3	736.0	444.9	328.9
Feb	326.9	206.6	390.8	497.6	346.2	271.1	739.6	466.9	328.6
Mar	327.5	201.1	396.0	504.2	347.4	267.2	739.6	464.5	328.9

(a) With the exception of Victoria and Tasmania, the number of persons in community-based corrections include those persons with breached or suspended orders — see Explanatory Notes, paragraph 10.

(b) Figures for the quarter and year for the first day of the month are calculated as a simple average — see Explanatory Notes, paragraph 5.

(c) Includes persons whose sex is unknown.

PERSONS IN COMMUNITY-BASED CORRECTIONS, by type of order(a)(b)

	NSW(c)	Vic.	Qld	SA	WA(d)	Tas.	NT	ACT	Aust. (c)
.....									
RESTRICTED MOVEMENT (NUMBER ON FIRST DAY OF MONTH)									
2001(e)	184	..	151	187	85	—	41	—	648
2002(e)	199	..	81	211	84	—	37	2	613
2003(e)	218	..	65	153	71	—	57	2	566
2003									
Mar Qtr(e)	225	..	80	226	75	—	61	3	670
Jun Qtr(e)	236	..	57	217	82	—	53	1	646
Sep Qtr(e)	215	..	66	86	72	—	53	1	493
Dec Qtr(e)	195	..	58	83	54	—	62	3	455
2004									
Mar Qtr	202	—	66	86	58	—	63	4	480
Jan	195	—	63	88	54	—	64	5	469
Feb	201	—	63	90	58	—	62	4	478
Mar	211	—	73	80	62	—	62	4	492
.....									
REPARATION—FINE OPTION (NUMBER ON FIRST DAY OF MONTH)									
2001(e)	118	1 092	4 711	1 742	541	71	211	—	8 485
2002(e)	56	1 107	2 632	1 891	398	95	25	—	6 203
2003(e)	7	1 590	1 940	1 301	388	85	3	—	5 314
2003									
Mar Qtr(e)	1	1 564	2 097	1 540	467	101	4	—	5 775
Jun Qtr(e)	6	1 588	2 027	1 367	393	87	3	—	5 471
Sep Qtr(e)	11	1 517	1 878	1 206	342	73	3	—	5 030
Dec Qtr(e)	12	1 692	1 757	1 092	349	77	3	—	4 981
2004									
Mar Qtr	17	1 643	1 729	986	272	78	3	—	4 728
Jan	14	1 789	1 687	1 010	269	74	3	—	4 846
Feb	11	1 617	1 741	964	275	78	3	—	4 689
Mar	27	1 524	1 759	983	271	81	3	—	4 648
.....									
REPARATION—COMMUNITY SERVICE (NUMBER ON FIRST DAY OF MONTH)									
2001(e)	4 926	935	2 148	1 374	2 230	342	298	190	12 441
2002(e)	4 447	915	2 116	1 534	2 329	379	242	159	12 120
2003(e)	4 411	945	1 883	1 566	2 148	380	256	140	11 730
2003									
Mar Qtr(e)	4 397	898	1 930	1 606	2 203	339	246	147	11 767
Jun Qtr(e)	4 459	919	1 892	1 590	2 130	380	279	145	11 794
Sep Qtr(e)	4 425	960	1 877	1 564	2 123	391	257	140	11 738
Dec Qtr(e)	4 363	1 003	1 834	1 505	2 136	407	243	127	11 619
2004									
Mar Qtr	4 347	1 016	1 834	1 421	2 142	407	256	123	11 547
Jan	4 301	983	1 815	1 389	2 162	393	255	119	11 417
Feb	4 361	991	1 819	1 422	2 147	414	255	129	11 538
Mar	4 380	1 075	1 867	1 453	2 117	414	259	121	11 686

.....

.. not applicable

— nil or rounded to zero (including null cells)

(a) If a person has more than one type of order, they are counted against each order in this table. If a person has more than one order of the same order type, they are counted once in the order type.

(b) With the exception of Victoria and Tasmania, the number of persons in community-based corrections includes those persons with breached or suspended orders — see Explanatory Notes, paragraph 10.

(c) Bail figures in New South Wales prior to September quarter 2003 are under enumerated — see Explanatory Notes, paragraph 13.

(d) Bail figures for WA became available from December quarter 2003 — see Explanatory Notes paragraph 41.

(e) Figures for the quarter and year for first day of the month counts are calculated as a simple average — see Explanatory Notes, paragraph 5.

	NSW(c)	Vic.	Qld	SA	WA(d)	Tas.	NT	ACT	Aust. (c)
.....									
SUPERVISION (COMPLIANCE)—PAROLE (NUMBER ON FIRST DAY OF MONTH)									
2001(e)	3 422	1 035	1 469	919	1 203	110	172	141	8 471
2002(e)	3 425	1 198	1 252	904	1 303	88	163	133	8 465
2003(e)	3 573	1 335	1 045	931	1 264	92	150	111	8 502
2003									
Mar Qtr(e)	3 534	1 301	1 130	969	1 284	88	159	116	8 583
Jun Qtr(e)	3 560	1 314	1 057	964	1 263	91	145	119	8 514
Sep Qtr(e)	3 579	1 345	1 013	895	1 275	93	141	104	8 443
Dec Qtr(e)	3 620	1 380	978	898	1 235	96	154	106	8 466
2004									
Mar Qtr	3 631	1 452	952	910	1 250	98	150	119	8 563
Jan	3 641	1 465	959	894	1 262	100	150	110	8 581
Feb	3 620	1 459	958	907	1 245	96	146	123	8 554
Mar	3 632	1 433	940	930	1 242	99	153	125	8 554
.....									
SUPERVISION (COMPLIANCE)—BAIL (NUMBER ON FIRST DAY OF MONTH)									
2001(e)	188	—	..	222	—	—	1	155	565
2002(e)	172	—	..	300	—	—	3	197	671
2003(e)	288	—	..	439	7	—	3	185	922
2003									
Mar Qtr(e)	176	—	..	412	—	—	3	168	759
Jun Qtr(e)	142	—	..	412	—	—	2	191	746
Sep Qtr(e)	454	—	..	469	—	—	3	194	1 120
Dec Qtr(e)	381	—	..	464	27	—	5	185	1 063
2004									
Mar Qtr	299	—	..	535	67	—	7	181	1 088
Jan	309	—	..	498	54	—	7	159	1 027
Feb	306	—	..	534	67	—	7	186	1 100
Mar	281	—	..	572	79	—	8	197	1 137
.....									
SUPERVISION (COMPLIANCE)—SENTENCED PROBATION (NUMBER ON FIRST DAY OF MONTH)									
2001(e)	11 351	3 678	7 906	2 407	3 196	532	528	845	30 442
2002(e)	11 109	3 725	7 888	2 641	3 342	438	465	812	30 419
2003(e)	10 618	3 940	7 607	2 642	3 212	500	528	842	29 888
2003									
Mar Qtr(e)	10 920	3 783	7 851	2 761	3 226	460	503	879	30 384
Jun Qtr(e)	10 743	3 844	7 833	2 742	3 172	504	506	833	30 176
Sep Qtr(e)	10 487	3 958	7 328	2 539	3 198	511	537	828	29 386
Dec Qtr(e)	10 322	4 174	7 416	2 524	3 252	524	565	828	29 604
2004									
Mar Qtr	10 107	4 083	7 415	2 453	3 280	509	583	833	29 262
Jan	10 035	4 236	7 358	2 449	3 277	533	577	822	29 287
Feb	10 142	4 099	7 371	2 443	3 288	509	589	845	29 286
Mar	10 143	3 914	7 517	2 466	3 275	485	582	832	29 214

.....

.. not applicable

— nil or rounded to zero (including null cells)

(a) If a person has more than one type of order, they are counted against each order in this table. If a person has more than one order of the same order type, they are counted once in the order type.

(b) With the exception of Victoria and Tasmania, the number of persons in community-based corrections includes those persons with breached or suspended orders — see Explanatory Notes, paragraph 10.

(c) Bail figures in New South Wales prior to September quarter 2003 are under enumerated — see Explanatory Notes, paragraph 13.

(d) Bail figures for WA became available from December quarter 2003 — see Explanatory Notes paragraph 41.

(e) Figures for the quarter and year for first day of the month counts are calculated as a simple average — see Explanatory Notes, paragraph 5.

EXPLANATORY NOTES

INTRODUCTION

1 This publication presents statistical series on persons held in either adult corrective services custody or who are serving adult community-based orders in Australia. It contains data on the number of persons by their sex, Indigenous status, type of custody, legal status and sentence type; the number of sentenced persons received into corrective services custody each month; and the number of federal prisoners.

2 Statistics presented in this publication are compiled in three ways:

- Average daily prisoner population: Counts taken on each day of the month are summed and divided by the number of days in that month to determine the average daily prisoner population for that month. The average daily periodic detainee population is a count of persons on periodic detention on each day a centre is open, divided by the number of days a centre is open.
- Sentenced prisoner reception figures: Counts are provided each month on the number of receptions where a prisoner is received as a sentenced prisoner. This includes prisoners with a change of legal status from unsentenced to sentenced.
- First day of the month prisoner population: Counts of prisoner populations, taken on or near the first day of the month (see Explanatory Notes, paragraphs 4 and 5), and counts of persons serving community-based corrections orders.

3 Although national standards and classifications are used in the compilation of these statistics, some discrepancies remain between the states and territories. These are due to legislative and procedural differences between jurisdictions and the way that these differences are reflected in agencies' administrative data systems. As part of its quality assurance strategy, the ABS is working with corrective services agencies to minimise the effect of these differences.

REFERENCE PERIOD/DATE

4 For the average daily prisoner population and the sentenced prisoner reception counts, the reference period is the complete reference month. For all other information in the publication, the reference date is the first day of the month. However, not all states and territories report strictly according to this 'first day of the month' rule:

- The Western Australian and Victorian prison population and Australian Capital Territory prisoners in New South Wales prisons are counted as at midnight on the last day of the month. In these cases the figures provided are taken to represent the prison population at the beginning of the following month to align with practices in other states and territories.
- The New South Wales prison population is counted on the last Sunday of the month. The New South Wales community-based corrections population is counted on the first day of the month.

5 Calculation of figures for the entire quarter and entire year varies depending on the counting unit and method of counting prisoners. These figures may be subject to rounding:

- Average daily figures: Figures are calculated by weighting the average according to the number of days in each month or year.
- First day of the month: Figures are simple averages. For quarterly figures, the sum of the monthly data is divided by three; for yearly figures, the figures for each month are added and the total divided by twelve.
- Sentenced receptions: Figures are totals of each month.

SCOPE

6 The scope of the statistics in this publication includes all persons remanded or sentenced to adult custodial corrective services agencies (including Work Outreach Camps and Community Custody Centres in Queensland), or who are serving adult community-based orders in each state and territory in Australia.

7 Counts of prisoners in the following custodial facilities are included in the collection:

- gazetted prisons in all jurisdictions
- periodic detention centres in New South Wales and the Australian Capital Territory

EXPLANATORY NOTES *continued*

SCOPE *continued*

- Community Custody Centres and Work Outreach Camps in Queensland
- cells in court complexes administered by corrective services in New South Wales
- transitional centres in New South Wales
- lock-ups in Western Australia operated by the police but designated as a prison by the Chief Executive Officer of Corrective Services.

8 The prisons and community corrections collection excludes the following custodial facilities:

- police lockups, police prisons and cells in court complexes not administered and controlled by corrective services
- gazetted police prisons in the Northern Territory
- juvenile detention centres
- immigration detention centres
- military prisons.

9 This collection includes counts of persons remanded or sentenced to adult custody facilities, or directed to serve community based orders administered by adult corrective service agencies. In all states and territories except Victoria and Queensland, persons are considered adults if aged 18 years and over. In Victoria and Queensland persons are considered adults if aged 17 years and over. The vast majority of persons counted in the collection are adults, however, juveniles may be included in exceptional circumstances.

10 Community-based corrections includes those persons with breached or suspended orders, with the exception of Victoria and Tasmania.

DATA SOURCE

11 Statistics in this publication are derived from information provided to the ABS from administrative records held by corrective services agencies within each state and territory. Statistics on federal prisoners are derived from records kept by the Criminal Law Division of the Australian Government Attorney-General's Department.

12 Tasmanian prisoner data for first day of month counts in Table 5 for reference periods prior to the September quarter 2003 are under enumerated. Data are currently being investigated and may be revised. Prior to January 2004, sentenced reception figures for Tasmania do not include all prisoners changing from unsentenced custody to sentenced custody.

13 New South Wales community-based corrections data are subject to ongoing quality assurance processes undertaken in this state. Prior to the September quarter 2003, pre-sentence reports were omitted from reported bail figures. Bail figures in Table 18 relating to earlier reference periods are under enumerated.

14 Queensland data are subject to ongoing quality assurance processes. Since 2002, prisoners held in Community Custody Centres are included in the custodial data. Custodial figures for 2001 may be under enumerated. Queensland sentenced receptions for Fine Default Only prisoners, prior to 2002, may also be under enumerated because these were previously classified as Other Sentenced receptions.

COUNTING RULES

15 Statistics for persons held in custody are presented by the state or territory in which they are held, which may not be the sentencing jurisdiction.

16 Prisoners who are serving fine default sentences concurrently with other sentences of imprisonment are counted under the Other Sentenced type and not as Fine Default Only prisoners. Offenders serving fine default sentences while on remand for other offences are counted as sentenced Fine Default Only prisoners.

17 If an offender has two or more different types of community-based orders operating simultaneously, then each order will be counted. If two or more community-based orders are of the same type, these orders together will only be counted as one order.

EXPLANATORY NOTES *continued*

INDIGENOUS IDENTIFICATION

18 In all states and territories persons are asked during entry into custody whether they identify as Aboriginal or Torres Strait Islander. It is uncommon for corrective services agencies to collect Indigenous status information from sources other than the person's own identification.

19 Some persons in custody are recorded as of unknown Indigenous status on the information systems of corrective services agencies, but unknown Indigenous status data have not been provided for this collection. Such persons are designated as non-Indigenous. It is intended that unknown Indigenous status will be collected from these systems in future.

AUSTRALIAN CAPITAL TERRITORY PRISONERS

20 The Australian Capital Territory has two remand centres for unsentenced prisoners and a periodic detention centre. In January 1999, ACT corrections commenced sending some unsentenced prisoners to New South Wales prisons. With the exception of some sentenced Fine Default Only prisoners, persons sentenced to full-time custody by Australian Capital Territory criminal courts are held in New South Wales prisons. During 2000 the Australian Capital Territory commenced detaining prisoners sentenced for Fine Default Only at their centre for unsentenced persons.

21 To provide greater understanding of the number of prisoners attributed to the Australian Capital Territory, while presenting an accurate picture of the New South Wales prisoner population, statistics relating to Australian Capital Territory prisoners in New South Wales prisons are presented as a subset of the New South Wales figures.

22 Imprisonment rate data for the Australian Capital Territory are included in the publication and are calculated on the basis of the total number of ACT prisoners (i.e. ACT prisoners held in NSW prisons, and ACT prisoners held in the ACT) divided by the estimated resident ACT adult population and multiplied by 100,000. For New South Wales, the imprisonment rate is based on the count of NSW prisoners, excluding ACT prisoners held in NSW prisons, divided by the estimated resident NSW adult population and multiplied by 100,000. Time series data have also been derived on this basis.

RATES AND RATIOS

23 Imprisonment and community-based corrections rates enable comparisons of prisoner numbers to be made across states and territories. Prisoner and community-based corrections rates are expressed per 100,000 adult population.

24 In this publication the population figures used in the calculation of rates are for persons aged 18 years and over for all states and territories except Victoria and Queensland where the population used is of persons aged 17 years and over (see Explanatory Notes, paragraph 9).

25 In some instances rates and ratios have not been published. Where this occurs, the cell concerned contains the symbol 'np'. This happens where, either the number of persons in custody is less than 10, or where the denominator population on which the rate is calculated is less than 5,000. This has been done because such rates and ratios can vary widely from month to month with small variations in numbers of persons, and therefore may give an inaccurate reflection of the involvement of persons in custody.

26 Rates for the Indigenous adult population in this publication are based on revised projections for 30 June 2003 (refer *Experimental Projections of the Aboriginal and Torres Strait Islander Population 30 June 1996 to 30 June 2006* (cat. no. 3231. 0)). These projections are in turn based on the results of the 1996 Census of Population and Housing.

27 Two series of these projections have been published. The so-called 'higher series' takes into account a possible increase in the propensity for people to identify themselves as Indigenous since the 1996 Population Census based on estimates from the 1991–1996 intercensal period. The lower series assumes no such change has taken place since 1996. The lower of the two series was used in calculating rates for the Indigenous

EXPLANATORY NOTES *continued*

RATES AND RATIOS *continued*

adult population in this publication. This is because, after discussions with representatives of corrective services agencies, it was felt that the propensity to identify as Indigenous has not increased to the same extent in the prison environment as might have occurred in the wider community.

28 A new set of projections of the Indigenous population, based on the 2001 Census of Population and Housing, are due for release in July 2004 in the publication *Experimental Estimates and Projections of Indigenous Australians, 1991 to 2016* (cat. no. 3238.0). Indigenous imprisonment rates will be revised using the data from these updated estimates when available.

29 Rates for the total adult prisoner population and persons in community-based corrections are calculated using the Estimated Resident Population (ERP) for each of the states and territories (refer *Australian Demographic Statistics* (cat. no. 3101.0)). As the population changes over time the denominator used for the calculation of rates varies, depending on the reference period. Rates are calculated using the ERP for two quarters prior to their respective quarters. Thus for the March quarter 2004, the ERP for the September quarter 2003 was used in the calculation of rates. This approach uses the latest ERP available at the time of publication.

30 The ratio of imprisonment rates of Indigenous persons to non-Indigenous persons is calculated by dividing the Indigenous imprisonment rate for each period and state or territory by the corresponding non-Indigenous imprisonment rate.

31 The ratio indicates the extent to which the imprisonment rates of Indigenous persons exceed the imprisonment rates of non-Indigenous persons. A ratio of 20.0 indicates that, for the given state or territory, the imprisonment rate of Indigenous persons per 100,000 adult population is 20 times that of the imprisonment rate of non-Indigenous persons.

INTERPRETATION OF INDIGENOUS STATISTICS

32 Tables 8–12 in this publication provide nationally comparable statistics on the imprisonment of Aboriginal and Torres Strait Islander (Indigenous) people. There are a number of issues that bear on the statistical measures of Indigenous imprisonment. Explanatory Notes 33–36 provide advice on how these statistics should be interpreted.

Numbers

33 The first and most basic measure of Indigenous imprisonment is the *number of persons imprisoned*. Imprisoned persons are classified as Indigenous if they identify themselves as Aboriginal or Torres Strait Islander at the time they are received into prison custody. These statistics in *Corrective Services Australia* are derived from administrative records held by corrective services agencies in each state and territory. The accuracy of the statistics is dependent upon the quality of the information collected by these agencies.

Proportions

34 The second measure is the Indigenous *proportion of the prisoner population*. This relates the number of Indigenous persons in custody to the total number of persons in custody, and provides a basis for comparing the composition of the prison population across jurisdictions.

Rates

35 The third measure of Indigenous imprisonment is the *rate of imprisonment*, that is the number of Indigenous prisoners per 100,000 adults in the Indigenous population. The number of persons imprisoned in any jurisdiction is partly a function of the size of the population in that state or territory. All other things being equal, a jurisdiction such as the Northern Territory with a large Indigenous population will have a larger number of Indigenous prisoners than a jurisdiction such as Tasmania with a small Indigenous population. The rate of imprisonment provides a basis for comparing the relative likelihood that any Indigenous adult in a state or territory will be imprisoned.

EXPLANATORY NOTES *continued*

Ratios

36 The fourth measure of Indigenous imprisonment is the *ratio of Indigenous to non-Indigenous imprisonment*. Australian states and territories have widely varying rates of imprisonment. Hence, the likelihood that any Indigenous adult will be imprisoned in any jurisdiction is partly a function of the overall likelihood of imprisonment in that jurisdiction. This ratio provides a measure of how much more likely it is that an Indigenous adult in a particular jurisdiction will be imprisoned when compared with his or her non-Indigenous counterparts.

SIGNIFICANT EVENTS

37 The Maryborough Correctional Centre, Queensland, was officially opened in April 2003. The Centre has the capacity to hold 500 prisoners.

38 From February 2001, legislative change in Western Australia resulted in an increased number of "Time to Pay" applications from fine defaulters. This contributed to a decrease in the number of Fine Option community-based corrections orders recorded.

39 During 2002 the following factors in Western Australia impacted on the prisoner population: an increase in the acquittal and dismissal rates in courts; greater use by the courts of suspended imprisonment and community orders as penalties; and a decrease in the breach rate for early release orders. The impact of these factors has been proportionally greater on the number of Indigenous prisoners who tend to be convicted of offences which attract shorter sentences.

40 During 2003 in Western Australia there was an increase in the number of Indigenous persons sentenced to imprisonment by the courts, mostly in relation to 'Driving/Traffic', 'Against the Person' and 'Justice/Good Order' offences.

41 Bail figures are included for the first time in WA from the December quarter 2003. These are a result of new sentencing legislation that may also influence other community corrections data in future issues.

42 During the 2001–02 financial year, Tasmania recorded a large increase in the number of unsentenced prisoners. This overall increase was due to an increase in lodgments in the Supreme Court coupled with the move by police to more actively oppose bail. The variation over the period is explained primarily by the availability of judicial resources. A Supreme Court Judge was allocated to a long running trial in the March and June quarters of 2002 — this represented 25% of the judicial resources allocated to crime by the court. There was also a reduction in the number of magistrates available in the Court of Petty Sessions due to a number of long running coronial inquests.

43 In the Northern Territory, over the 12 months to 30 June 2003, there has been an increase in the number of Indigenous persons sentenced to imprisonment for a range of assault and driving offences.

RELATED PUBLICATIONS

ABS Publications

44 Other ABS publications which may be of interest include:
Australian Standard Offence Classification (cat. no.1234.0)—irregular
Crime and Safety, Australia (cat. no. 4509.0)—irregular
Criminal Courts, Australia (cat. no. 4513.0)—issued annually
Prisoners in Australia (cat. no. 4517.0)—issued annually
Recorded Crime—Victims, Australia (cat. no. 4510.0)—issued annually
Australian Demographic Statistics (cat no. 3101.0) —issued quarterly
Australian Social Trends (cat no. 4102.0) —issued annually
General Social Survey: Summary Results, Australia (cat no. 4159.0) —irregular
Information Paper: Measuring Crime Victimisation, Australia: The Impact of Different Collection Methodologies (cat no. 4522.0.55.001) —single issue
Measures of Australia's Progress (cat no. 1370.0) —issued annually
Year Book Australia (cat no. 1301.0) —issued annually

EXPLANATORY NOTES *continued*

ABS Publications *continued*

45 *The Information Paper: Measuring Crime Victimization, Australia: The Impact of Different Collection Methodologies* (cat. no. 45522.0.55.001) was released by the Australian Bureau of Statistics in 2004. The main aim of this paper is to increase community understanding of the nature of crime measurement in Australia and why the findings from different data sources may differ. The paper outlines national crime victimisation statistics available from several different sources in the Australian context and draws comparisons between the statistics from these sources. The paper also describes methodological differences between survey sources and the possible impacts of the methodological differences between the survey vehicles.

46 Current publications and other products released by the ABS are listed in the *Catalogue of Publications and Products* (cat. no. 1101.0). The Catalogue is available from any ABS office or the ABS web site <<http://www.abs.gov.au>>. The ABS also issues a daily Release Advice on the web site which details products to be released in the week ahead. The National Centre for Crime and Justice Statistics releases a biannual newsletter that is published on the ABS website. The Centre can be contacted by email through <crime.justice@abs.gov.au>.

Non-ABS Publications

47 Non-ABS sources which may be of interest include:

Australian Institute of Criminology, *List of Publications* <<http://www.aic.gov.au>>

Crime Research Centre, University of Western Australia, *Crime and Justice Statistics for Western Australia*

NSW Bureau of Crime Statistics and Research, *New South Wales Criminal Courts Statistics*

Department of Justice, Northern Territory, *Northern Territory Quarterly Crime and Justice Statistics*

Office of Crime Statistics and Research, South Australia, *Crime and Justice in South Australia*

Steering Committee for the Review of Commonwealth/State Service Provision, *Report on Government Services*

Department of Justice, Victoria, *Statistical Profile of the Victorian Prison System*

Department of Corrective Services, New South Wales, *NSW Inmate Census*

GLOSSARY

Bail	This is generally a pre-sentence option where an offender is released into the community for a period before they appear in court for trial or final sentencing. Bail orders can require a financial surety to be lodged with the court, and a number of conditions including supervision and residential requirements designed to ensure the re-appearance of the offender in the court. Bail counts are available only in states and territories where bail orders are supervised by corrective services. Bail is a sub-category of Supervision where the person is under the supervision of corrective services (<i>see</i> Supervision).
Community-based corrections	This refers to the community-based management of court-ordered sanctions, post-prison administrative arrangements and fine conversions for offenders, which principally involve the provision of one or more of the following activities: supervision, programmes or community work.
Community Service	This category of community-based correction orders includes sentencing options requiring prisoners to undertake a specified number of hours of unpaid, supervised work to benefit the community on an approved project. Community service is a sub-category of Reparation (<i>see</i> Reparation).
Corrective services custody	Confinement in a place intended primarily for the purpose of confining prisoners, such as a prison, prison farm, Periodic Detention Centre or Community Custody Centre.
Federal sentenced prisoner	Persons charged and sentenced under a Commonwealth statute. For the purposes of this publication federal sentenced prisoners are those persons who are recognised by the Criminal Law Division of the Australian Government Attorney-General's Department as having been charged and sentenced under a Commonwealth statute.
Fine default only	A custodial sentence type where the prisoner is serving a sentence for default of a fine and no other concurrent offence.
Fine option	A community-based sentence type where the prisoner is serving a sentence for default of a fine. In most jurisdictions this order type requires an offender to complete community service as a reparatory act. Fine option is a sub-category of Reparation (<i>see</i> Reparation).
Full-time prison custody	A type of custody where a prisoner is required to be held in custody on a full-time basis. This includes prisons, QLD Community Custody Centres and work outreach camps. Full-time prison custody excludes periodic detention (<i>see</i> Periodic Detention).
Home Detention	(<i>see</i> Restricted Movement)
Indigenous prisoner	A prisoner who identifies as either Aboriginal, Torres Strait Islander or both.
Legal status	An offender may be either sentenced or unsentenced depending on the warrant(s) or court order(s) which provide the legal basis for the administration of the person through the criminal justice system.
Open custody	Refers to prisoners housed in minimum security custodial facilities, that do not require them to be confined by a secure perimeter physical barrier, irrespective of whether a physical barrier exists.
Other sentenced	A sentence type where a person is serving a sentence other than, or in addition to, a fine default sentence.
Parole	A parole order is made following a period of imprisonment and requires a prisoner to be subject to supervision in the community. Additional conditions may also be applied such as programmes, counselling or drug testing. Parole is a sub-category of Supervision (<i>see</i> Supervision).
Periodic detention	A type of custody or order where a sentenced prisoner is required to be held in custody on a part-time basis. Currently this consists of two consecutive days in a one-week period, while remaining at liberty during the rest of the week.
Prisoner	A person held in custody. For the purposes of this collection, prisoners are those whose confinement is the responsibility of a corrective services agency.

GLOSSARY *continued*

Reparation	Reparation refers to all offenders with an order that requires them to undertake unpaid, justice agency-approved community service work.
Restricted movement	This refers to offenders who are subject to a system of restricted movement including supervision and/or electronic monitoring. This category includes home detention where release is limited to a nominated place of residence as an alternative to full-time or periodic custody. Restricted movement can be either a pre-sentence or post-sentence measure.
Secure custody	Refers to prisoners housed in medium or maximum security custodial facilities requiring them to be confined by a secure physical barrier.
Sentenced person	A legal status indicating that a person has received a custodial or community-based order from a court in response to a conviction for an offence.
Sentenced prisoner reception	<p>Refers to entry into corrective services custody from the community, having received a sentence of imprisonment as an outcome of a court proceeding. It also includes persons who are sentenced to custody while in custody on remand (i.e. change status from a remand to a sentenced prisoner). Sentenced prisoners in custody who receive a further sentence of imprisonment are not counted as sentenced receptions.</p> <p>Two types of sentenced prisoner reception are distinguished:</p> <ul style="list-style-type: none">■ A <i>fine default only</i> reception is a sentenced reception where a person enters custody as a result of defaulting on the payment of a fine and no other concurrent offence.■ An <i>other sentenced</i> reception is a sentenced reception (including changes of status from unsentenced to sentenced) for anything other than a fine default only reception.
Sentenced probation	A supervision order made following an original sentence handed down in court following conviction. A probation order generally requires 'good behaviour' and compliance with the directions of supervisors. The order may also require compliance with conditions such as program attendance and residential requirements.
Supervision (compliance)	This includes community-based orders other than those categorised as restricted movement or reparation (e.g. parole, bail and sentenced probation).
Unsentenced person	A legal status indicating that a person is confined to custody or supervision while awaiting the outcome of their trial. Some sentenced prisoners may also be 'remanded in custody', (i.e. are unsentenced) in relation to other offences pending a court hearing, convicted but awaiting sentence (remanded in custody for sentence), or awaiting deportation. In such cases, these prisoners are counted as sentenced.

FOR MORE INFORMATION . . .

- INTERNET* **www.abs.gov.au** the ABS web site is the best place to start for access to summary data from our latest publications, information about the ABS, advice about upcoming releases, our catalogue, and Australia Now—a statistical profile.
- LIBRARY* A range of ABS publications is available from public and tertiary libraries Australia-wide. Contact your nearest library to determine whether it has the ABS statistics you require, or visit our web site for a list of libraries.
- CPI INFOLINE* For current and historical Consumer Price Index data, call 1902 981 074 (call cost 77c per minute).
- DIAL-A-STATISTIC* For the latest figures for National Accounts, Balance of Payments, Labour Force, Average Weekly Earnings, Estimated Resident Population and the Consumer Price Index call 1900 986 400 (call cost 77c per minute).

INFORMATION SERVICE

Data already published that can be provided within five minutes will be free of charge. Our information consultants can also help you to access the full range of ABS information—ABS user pays services can be tailored to your needs, time frame and budget. Publications may be purchased. Specialists are on hand to help you with analytical or methodological advice.

- PHONE* 1300 135 070
- EMAIL* client.services@abs.gov.au
- FAX* 1300 135 211
- POST* Client Services, ABS, GPO Box 796, Sydney NSW 2001

WHY NOT SUBSCRIBE?

ABS subscription services provide regular, convenient and prompt deliveries of selected ABS publications and products as they are released. Email delivery of monthly and quarterly publications is available.

- PHONE* 1300 366 323
- EMAIL* subscriptions@abs.gov.au
- FAX* (03) 9615 7848
- POST* Subscription Services, ABS, GPO Box 2796Y, Melbourne Vic 3001



2451200003045

ISSN 1440 5997

RRP \$23.00